

# Sportsmobile 2004 4WD Vehicle

## Sportsmobile Dynatrac Front Axle Spare Parts List Pro Rock 5500 lb Rated

Tie Rod Ends:        Moog # ES194R                    Dynatrac # DA60-3304-A  
                              Moog # ES194L                    Dynatrac # DA60-3304-B

Ball Joints:            Spicer # 707238X

Brake Caliper/Pads: 2004 E-350

Brake Rotor: 1995-98 Ford F350/Auto Specialty AR8553/ Dynatrac #DA601125-D

Wheel Studs:        Ford # F81Z-1107-AD

Timken Wheel Bearings:

Inner:	387A	Dynatrac # DA60-1244-A
Inner Race:	382A	Dynatrac # DA60-4222-B
Outer:	LM104949	Dynatrac # DA60-1244-B
Outer Race:	LM104911	Dynatrac # DA602-4222-C
Grease Seal:	48816	Dynatrac # DA60-1175-D

Spindle Spanner nut:        Spicer # 33732                    Dynatrac #DA60-1195-A  
Lock washer:                Spicer #33733                    Dynatrac #DA60-1198-A

Axle Shaft u-joint:        Spicer # 5-332X                    Dynatrac #DA60-3249-A

Inner Axle Seal:            36487                                Dynatrac #DA60-3254-A

Warn Premium Manual Hubs:    Warn #38826

Yoke: 1350 Series Spicer# 3-4-5731X

ABS Sensor Driver Side: GM 15990503  
ABS Sensor Passenger Side: GM 15990504

Made in the USA  
[www.sportsmobile.com](http://www.sportsmobile.com)

**Sportsmobile Inc**  
250 Court.  
Huntington, IN 46750  
(260) 356-5435  
Fax (260) 358-0328

**Sportsmobile Texas**  
9805 Gray Blvd  
Austin, TX 78758  
(512) 835-4409  
Fax (512) 835-1293

**Sportsmobile West**  
3631 S. Bagley Ave.  
Fresno, CA 93725  
(559) 233-8267  
Fax (559) 486-8267



Engine Oil (6.8L):	5W20 synthetic blend (or 5W30)
Transmission (4R100):	MERCON ATF (17Q)
Power Steering:	MERCON ATF
Coolant:	yellow-color/gold (29.4Q)
Brake Fluid:	DOT3
Rear axle (D60 Is):	SAE 75W-140 synthetic (6.3p) (& Additive Friction Modifier C8AZ—19B546—A or EST-M2C118-A)
Front axle (D60 ARB):	Torco 85-140 GL6
Transfer Case:	Torco MTF GL4 (2.5Q) (or use synthetic motor oil XXw-50)

# Sportsmobile 2004 4WD Vehicle

	Miles (Thousands)	5	10	15	20	25	30	35	40	45	50	55	60
	Kilometers (Thousands)	8	16	24	32	40	48	56	64	72	80	88	96
1	Check wheel lug nut torque (see Notice below)	x	x	x	x	x	x	x	x	x	x	x	x
2	Inspect and lubricate front wheel bearings			x			x			x			x
3	Inspect disc brake system		x		x		x		x		x		x
4	Lubricate steering linkage, driveshaft U-joints, and front and rear slip-yokes	x	x	x	x	x	x	x	x	x	x	x	x
5	Lubricate caliper slide rails			x			x			x			x
6	Inspect needle bearing lubrication						x						x
7	Inspect hub lock lubrication						x						x
8	Check oil level & condition in front axle (Torco 85-140 GL6)		x		x		x		x		x		x
9	Change front axle oil				x				x				x
10	Check oil level & condition in transfer case (Torco MTF GL4)		x		x		x		x		x		x
11	Change transfer case oil						x						x

12 **Heavy Duty Use;** When hubs & axles are submerged in water, etc. maintenance schedule item 1-11 should be performed A.S.A.P.

Please refer to the Ford general maintenance schedule for additional information. This document takes preference.

NOTE: Repeat maintenance schedule for each successive 60,000 mile intervals.

## NOTICE!!!

**DRIVER - DEALER - OWNER  
CHECK WHEEL LUG NUTS**

1. Check wheel lug nuts at 50, 100 and 300 miles. Torque to 140 ft lbs.
2. Check lug nuts periodically afterwards.
3. Before a trip, always check tire pressure.
4. After changing or rotating tires repeat #1
5. Alignment specifications; see attached specification sheet.

### **Sportsmobile West**

3631 S. Bagley Ave.  
Fresno, CA 93725  
(559) 233-8267  
Fax (559) 486-8267

# Sportsmobile 2004 4WD Vehicle

Customer: SILVERTON  
VIN# 1FDSE34S44HB01150

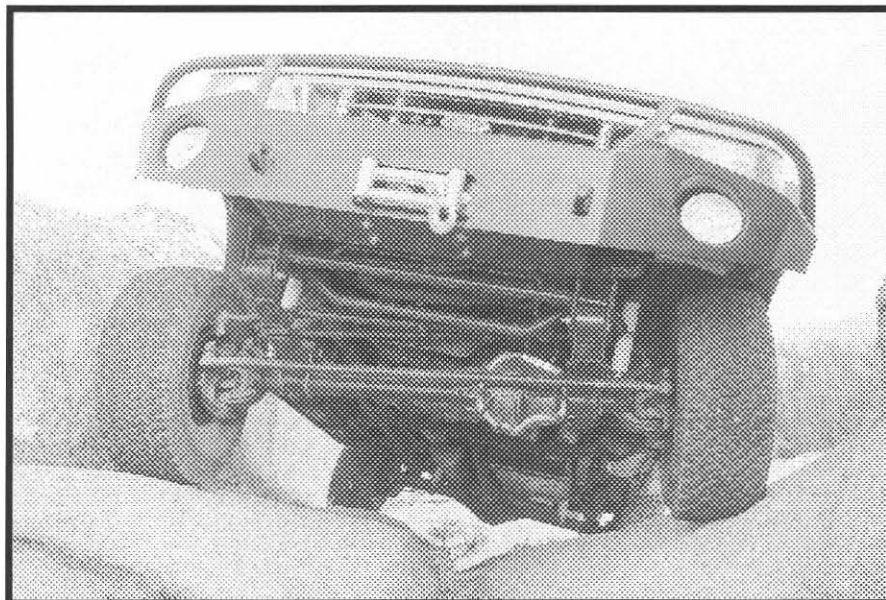
Date: 10/1/04

## Alignment Specifications

Specification  
Before Alignment  
After Alignment

CASTER		CAMBER		KPI		TOE
RIGHT	LEFT	RIGHT	LEFT	RIGHT	LEFT	
5-8p	5-8p	1/8n	1/4p			1/16 inch
6 1/4	6	1/2	3/8p			
6 1/4	6	1/2	3/8p			1/16 inch

Vendor Betts Truck



**Sportsmobile Inc**  
250 Court. St.  
Huntington, IN 46750  
(260) 356-5435  
Fax (260) 358-0328

**Sportsmobile Texas**  
9805 Gray Blvd  
Austin, TX 78758  
(512) 835-4409  
Fax (512) 835-1293

**Sportsmobile West**  
3631 S. Bagley Ave.  
Fresno, CA 93725  
(559) 233-8267  
Fax (559) 486-8267

## 8 Parts List

### 8.2 Itemized Parts List

(See exploded diagram figure 25.)

<b>AIR LOCKER MODEL No. :</b>		<b>RD36</b>	
<b>ITEM #</b>	<b>QTY</b>	<b>DESCRIPTION</b>	<b>PART #</b>
01	1	FLANGE CAP	021502
02	1	CLUTCH GEAR	050401
03	1	DIFFERENTIAL CASE	011702
04	4	PISTON SPRING	150101
05	3	CROSS SHAFT RETAINING PIN	120301
06	1	LONG CROSS SHAFT	060703
07	2	SHORT CROSS SHAFT	060802
08	1	PISTON (Polyamide)	040501
09	1	BONDED SEAL	160703
10	1	CYLINDER CAP	030803
11	2	SEAL HOUSING O-RING	160207
12	8	CYLINDER CAP RETAINING BOLT	200205
13	8	TAB WASHER – M8	150401
14	1	TAPERED ROLLER BEARING	160107
15	1	SEAL HOUSING	080701
16	1	SHIM KIT	SHK001
17	1	SPLINED SIDE GEAR	130801
18	4	PINION THRUST WASHER	151104
19	4	PINION GEAR	140401
20	1	SPIDER BLOCK	070401
21	1	SIDE GEAR	130701
22	2	SIDE GEAR THRUST WASHER	151004
*	1	BULKHEAD KIT, O-RING TYPE, 3.5-5mm	170105
*	1	PUSH-IN FITTING, 5mm (R1 5 1/8")	170201
*	1	AIR LINE (5mm DIA X 6m LONG)	170301
*	1	NIPPLE, 1/8" BSP, MALE TO MALE	170501
*	1	SOLENOID VALVE	180103
*	1	ACTUATOR SWITCH	180209
*	1	SWITCH COVER (REAR)	180211
*	1	SWITCH COVER (FRONT)	180210
*	10	CABLE TIE	180301
*	1	WARNING LABEL	210101
*	1	BUMPER STICKER	210102
*	1	OPERATING & SERVICE MANUAL	210200
*	1	INSTALLATION GUIDE	210236

\* Not illustrated in exploded view.

# ADVANCE ADAPTERS INC.

P.O. Box 247, 4320 Aerotech Center Way

Paso Robles, CA 93447

Telephone: (800) 350-2223 Fax: (805) 238-4201

# P/N: ATLAS

PAGE 1 OF 2

Page Rev. Date: 09-16-03

## ATLAS TRANSFER CASE

### KIT CONSISTS OF:

<u>No.</u>	<u>Qty</u>	<u>Part No.</u>	<u>Description</u>
1.	1	301600	SITE TUBE KIT
2.	1	302020	5/8" SHIFT CAP PLUG
3.	6	302071	FLANGED NUT 3/8"-24 PLATED
4.	6	302069	STUD BOLT 2-3/16" O.A.L. 3/8"-16, 24
5.	2	303200	TORCOIL
6.	1	AT001	ATLAS INSTRUCTION MANUAL
7.	1	AW	ATLAS DRIVESHAFT WARNING

### FOR IN-HOUSE USE. SHIPPING CHECK LIST

- Leak tested
- Check yokes
- Check input splines
- Check Left or Right drop
- Check order for correct gear ratio
- Test shift unit
- Site tube kit
- Shift kit included and shifter instruction sheet provided.
- Oil included
- Stud bolts and flange nuts included

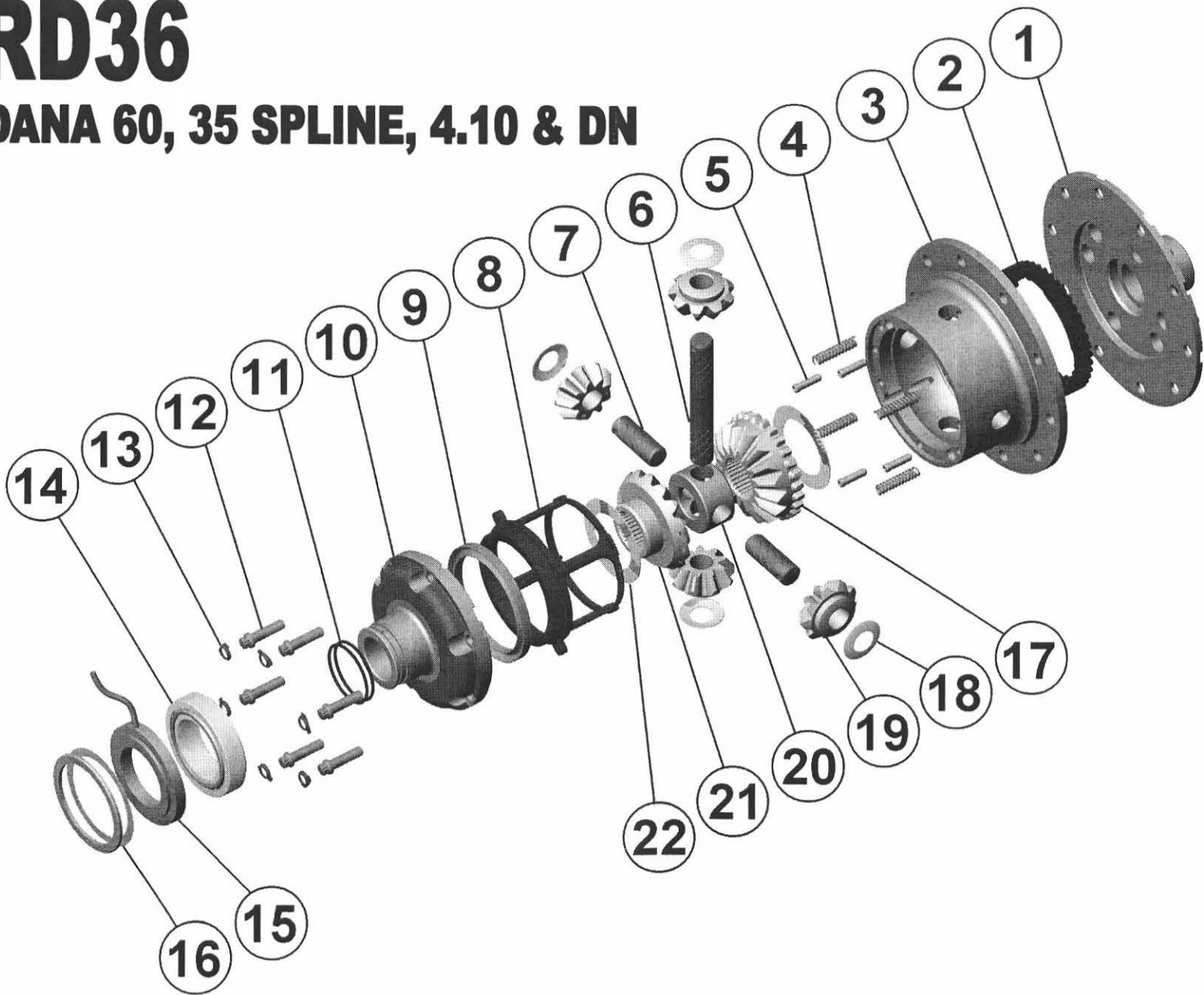
### THIS UNIT IS SHIPPED DRY!

All open holes are plugged on the new Atlas case with red plastic caps only to keep contaminants out.

**SPECIAL NOTE:** The components packaged in this kit have been assembled and machined for specific type of conversions. Modifications to any of the components will void any possible warranty or return privileges. If you do not fully understand modifications or changes that will be required to complete your conversion, we strongly recommend that you contact our sales department for more information. This instruction sheet is only to be used for the assembly of Advance Adapter components. We recommend that a service manual pertaining to your vehicle be obtained for specific torque values, wiring diagrams and other related equipment. These manuals are normally available at automotive dealerships and parts stores.

# RD36

**DANA 60, 35 SPLINE, 4.10 & DN**



**Figure 25.**

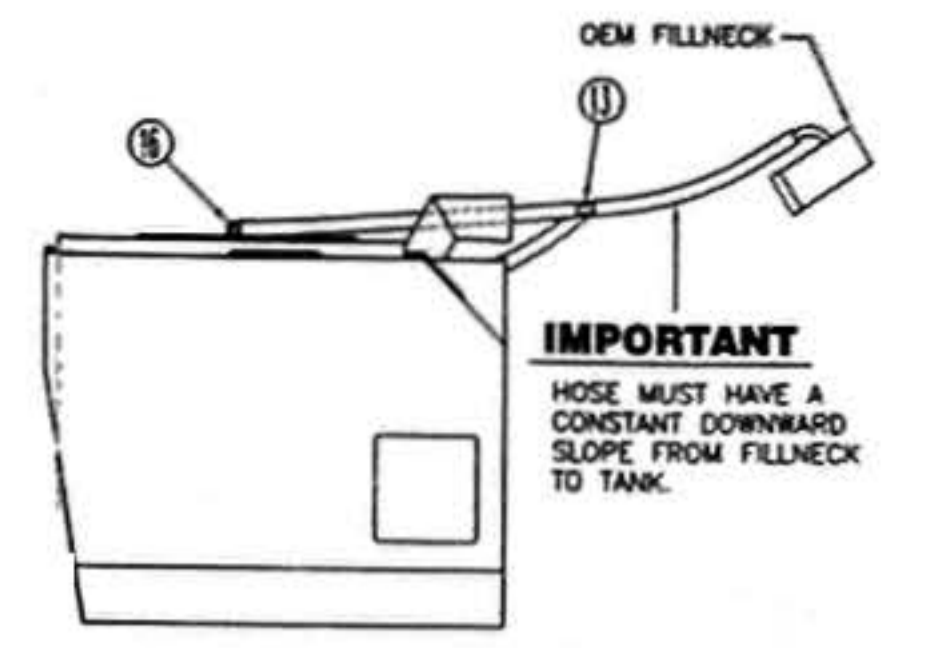
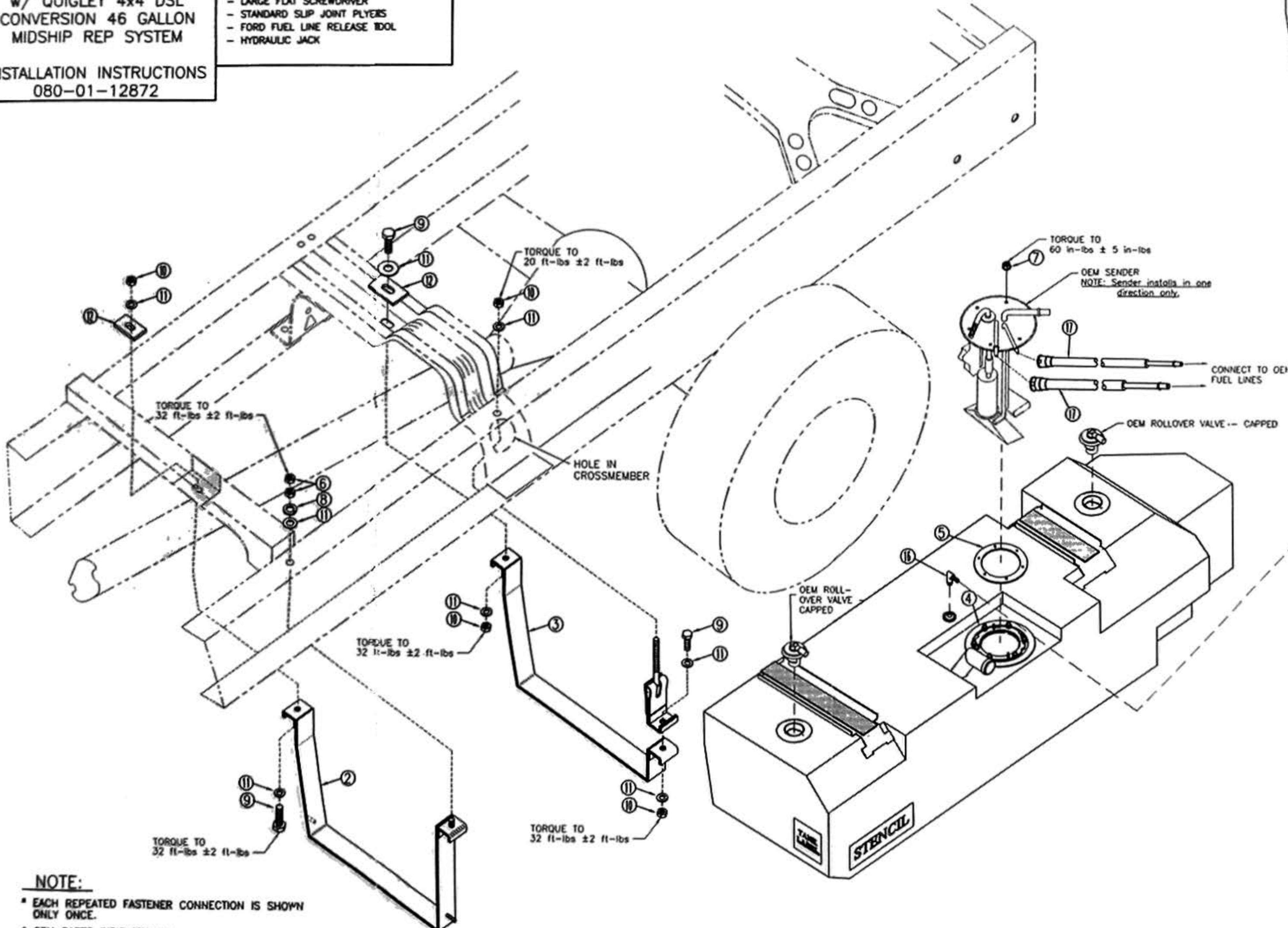
**8.1 Exploded Assembly Diagram**

(See itemized parts list overleaf)

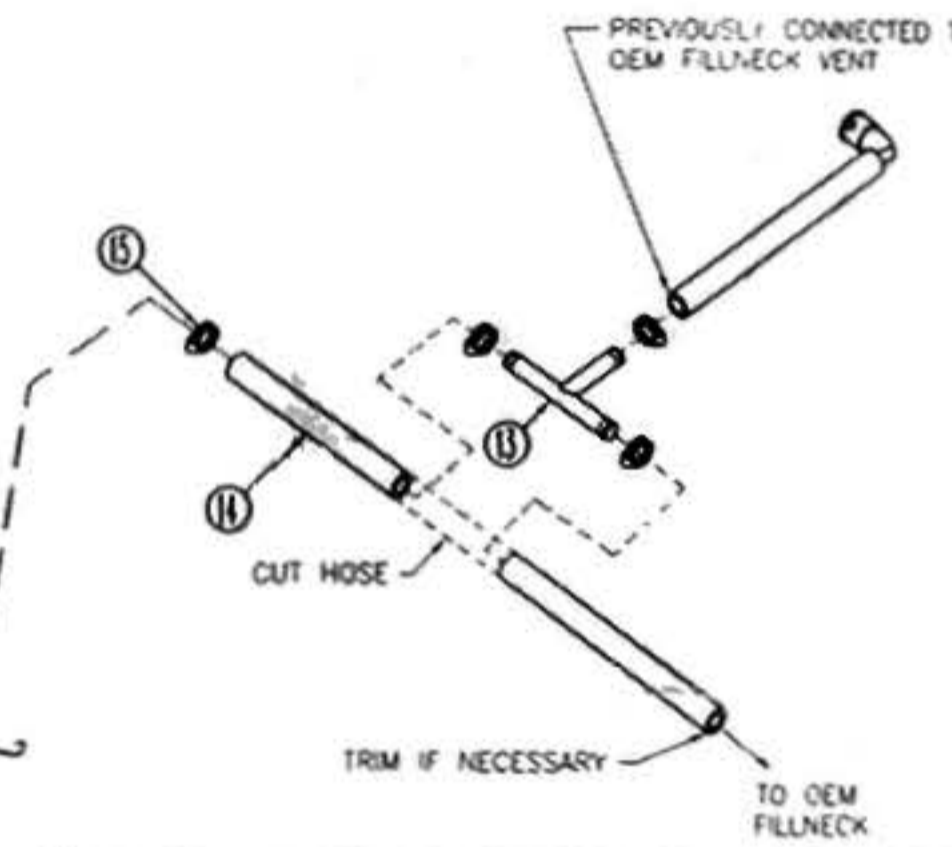
**TRANSFER FLOW INC.**  
 1444 FORTRESS ST  
 CHICO, CA 95973  
 PHONE: (530) 893-5209  
 FAX: (530) 893-0204  
 2004 FORD E-SERIES VAN  
 w/ QUIGLEY 4x4 DSL  
 CONVERSION 46 GALLON  
 MIDSHIP REP SYSTEM

INSTALLATION INSTRUCTIONS  
 080-01-12872

- TOOLS REQUIRED FOR THIS INSTALLATION:**
- 5/16" STANDARD SOCKET
  - 1/2" STANDARD SOCKET
  - 11/16" DEEP SOCKET
  - 10mm DEEP SOCKET
  - 15mm DEEP SOCKET
  - 17mm DEEP SOCKET
  - 10mm OPEN/BOX END WRENCH
  - 5/8" OPEN/BOX END WRENCH
  - LARGE FLAT SCREWDRIVER
  - STANDARD SLIP JOINT PLIERS
  - FORD FUEL LINE RELEASE TOOL
  - HYDRAULIC JACK



**FRONT VIEW**



**PARTS LIST**

- 46.0 GALLON REPLACEMENT FUEL TANK
- FRONT FORMED MOUNTING STRAP
- REAR FORMED MOUNTING STRAP
- SENDING UNIT SUPPORT RING
- SENDING UNIT GASKET
- 7/16"-14 HEX NUT (2)
- 6mm FLANGED NUT (6)
- 7/16" LOCK WASHER (8)
- 7/16"-14 HEX HEAD BOLT x 1 1/2" LG (3)
- 7/16"-14 TORQUE PREVAILING NUT (4)
- 7/16" FLAT WASHER (8)
- 3/16" x 1 1/2" x 2 1/2" STIFFENER (2)
- 1/2" METAL TEE
- 1/2" ID HOSE
- #6 GEAR CLAMP (4)
- 1/2" BARB x 1/2" MPT BRASS ELBOW
- FUEL LINE EXTENSION

**TROUBLESHOOTING GUIDE**

- TANK IS FILLING SLOWLY OR WILL NOT FILL TO CAPACITY**  
 Possible reasons:  
 - Fill hose is kinked.  
 - Fill vent hose is kinked or sagging.  
 - Fill tube does not have a continuous downward slope.
- FUEL GAUGE ONLY READS WAY PAST FULL**  
 - Fuel sending unit circuit is open.
- FUEL GAUGE ONLY READS WAY PAST EMPTY**  
 - Fuel sending unit circuit is grounded out.
- VEHICLE WON'T RUN**  
 Possible reasons:  
 - Fuel supply or return lines are kinked.

**NOTE:**

- \* EACH REPEATED FASTENER CONNECTION IS SHOWN ONLY ONCE.
- \* OEM PARTS INDICATED BY

**INSTRUCTION SHEET**

# 580