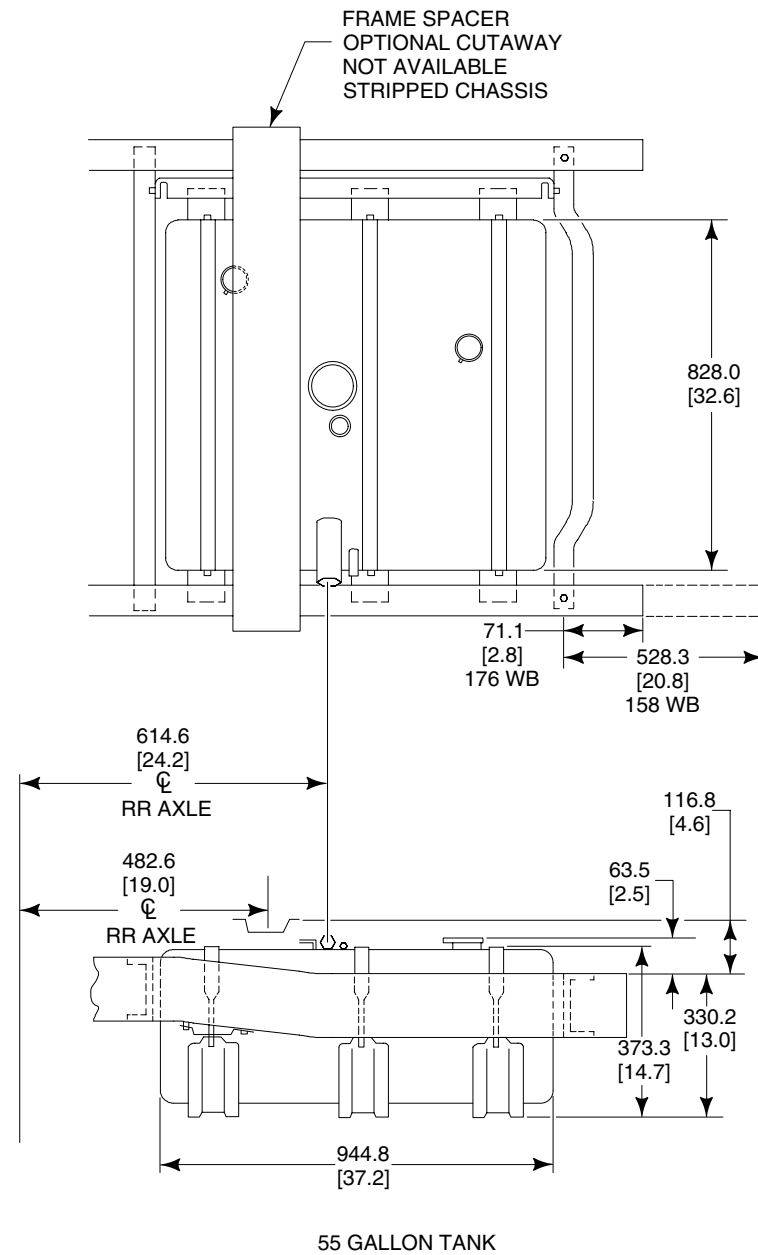


E-350/450 SUPER DUTY CUTAWAY/CHASSIS CAB/STRIPPED CHASSIS 37/55 GALLON AFT-OF-AXLE FUEL TANK

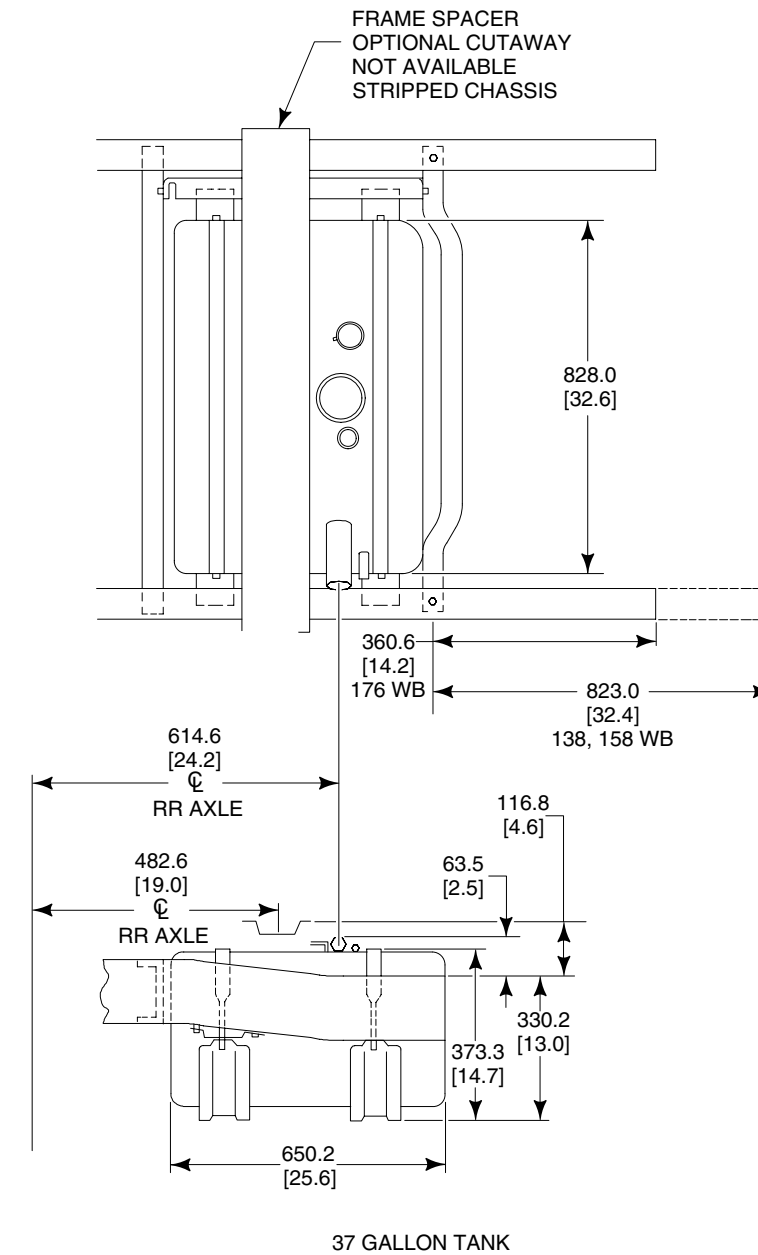
2004
MODEL YEAR

E-SERIES



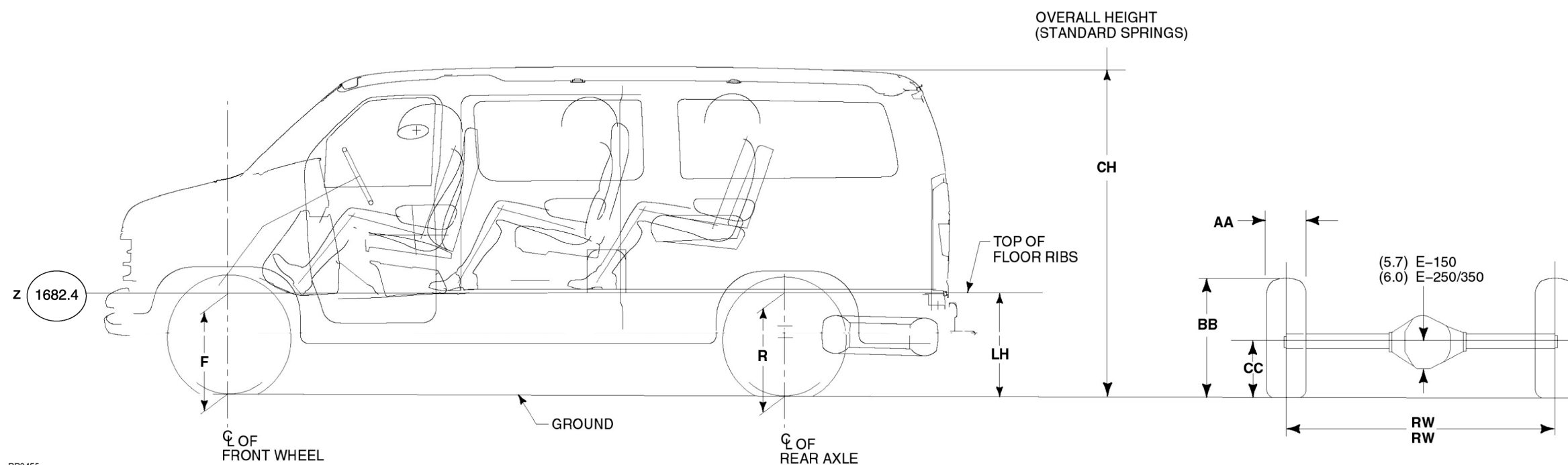
WARNING

**18 INCH MIN. FRAME
EXTENSION REQUIRED
WITH THE 55 GAL. TANK
AND THE 176 " WHEELBASE ONLY**



AXLE/TIRE/VEHICLE HEIGHT DATA E-SERIES VAN/WAGON

2004
MODEL YEAR



BB045E

MODEL	WB [in]	GVWR [lb]	BASE TIRE ⁽⁵⁾	F HEIGHT AT WHEEL FRONT ⁽¹⁾		R HEIGHT AT AXLE REAR ⁽¹⁾		LH ⁽¹⁾		CH ⁽¹⁾		AA	BB	CC*	FW	RW
				CURB ⁽²⁾	LOADED ⁽³⁾	CURB ⁽²⁾	LOADED ⁽³⁾	EMPTY	LOADED	EMPTY	LOADED					
E-150 VAN	138	6700	P235/70R16XL	597 [23.5]	564 [22.2]	637 [25.1]	561 [22.1]	683 [26.9]	574 [22.6]	2050 [80.7]	1976 [77.8]	218 [8.6]	676 [26.6]	328 [12.9]	1763 [69.4]	1707 [67.2]
E-150 VAN ⁽⁴⁾	138	7000	P235/70R16XL	625 [24.6]	576 [22.7]	655 [25.8]	569 [22.4]	686 [27.0]	584 [23.0]	2055 [80.9]	1984 [78.1]	236 [9.3]	754 [29.7]	333 [13.1]	1763 [69.4]	1707 [67.2]
E-250 VAN	138	7200	LT225/75R16E	663 [26.1]	625 [24.6]	703 [27.7]	640 [25.2]	742 [29.2]	640 [25.2]	2118 [83.4]	2032 [80.0]	236 [9.3]	752 [29.6]	345 [13.6]	1763 [69.4]	1692 [66.6]
E-250 VAN EXTENDED VAN	138	7300	LT225/75R16E	663 [26.1]	625 [24.6]	734 [28.9]	640 [25.2]	752 [29.6]	645 [25.4]	2118 [83.4]	2032 [80.0]	236 [9.3]	752 [29.6]	345 [13.6]	1763 [69.4]	1692 [66.6]
E-350 SUPER DUTY VAN	138	9500	LT245/75R16E	703 [27.7]	643 [25.3]	790 [31.1]	665 [26.2]	808 [31.8]	668 [26.3]	2136 [84.1]	2045 [80.5]	263 [10.3]	767 [30.2]	358 [14.1]	1763 [69.4]	1687 [66.4]
E-350 SUPER DUTY EXTENDED VAN	138	9400	LT245/75R16E	711 [28.0]	640 [25.2]	785 [30.9]	668 [26.3]	813 [32.0]	676 [26.6]	2136 [84.1]	2045 [80.5]	263 [10.3]	767 [30.2]	358 [14.1]	1763 [69.4]	1687 [66.4]
E-150 WAGON	138	7000	P235/70R16XL	620 [24.4]	576 [22.7]	665 [26.2]	561 [22.1]	683 [36.9]	584 [23.0]	2055 [80.9]	1984 [78.1]	236 [9.3]	754 [29.7]	333 [13.1]	1763 [69.4]	1707 [67.2]
E-350 SUPER DUTY WAGON	138	8600	LT225/75R16E	703 [27.7]	627 [24.7]	721 [28.4]	612 [24.1]	731 [28.8]	610 [24.0]	2118 [83.4]	2032 [80.0]	236 [9.3]	752 [29.6]	345 [13.6]	1763 [69.4]	1687 [66.4]
E-350 SUPER DUTY EXTENDED WAGON	138	9100 9300	LT245/75R16E	706 [27.8]	643 [25.3]	747 [29.4]	645 [25.4]	767 [30.2]	645 [25.4]	2136 [84.1]	2045 [80.5]	263 [10.3]	780 [30.7]	358 [14.1]	1763 [69.4]	1687 [66.4]

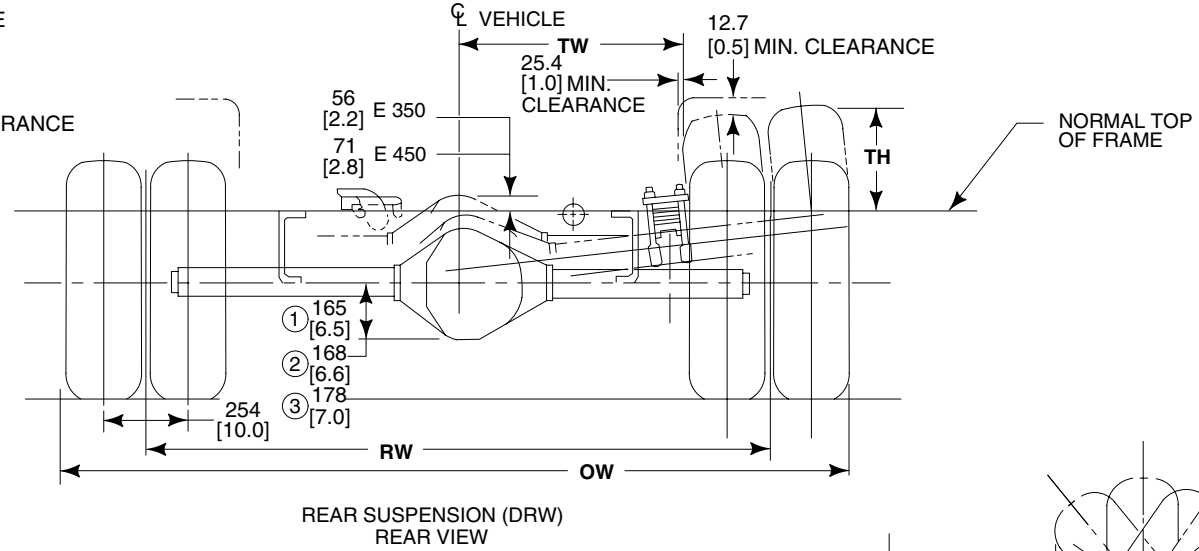
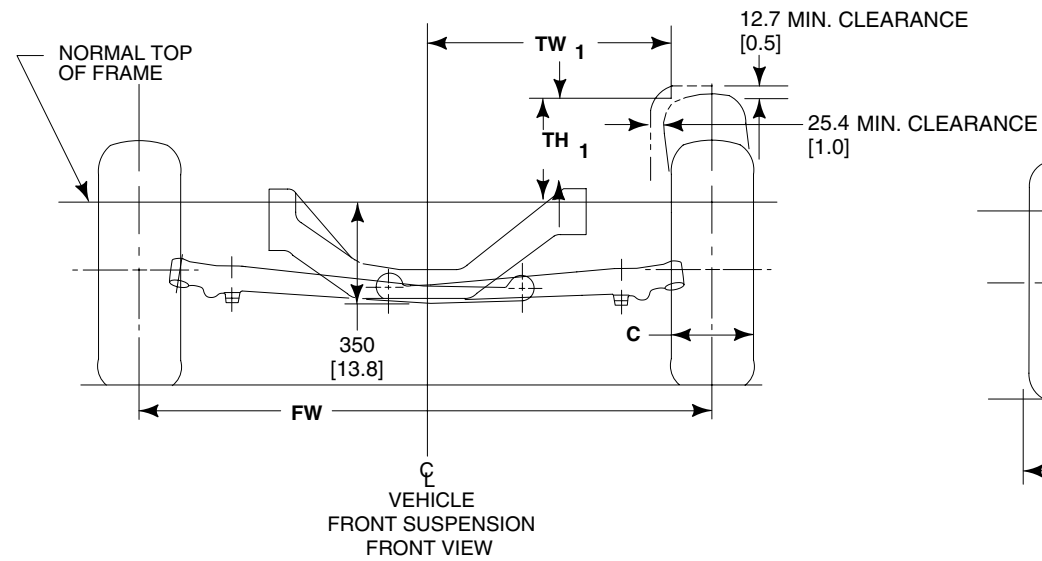
(1) THE HEIGHT DATA SHOWN REPRESENTS DIMENSIONS OF A BASE/STANDARD VEHICLE WITH NO OPTIONS, ACTUAL HEIGHT MAY VARY DUE TO PRODUCTION TOLERANCES.
 (2) HEIGHT AT BASE CURB WEIGHT WITH STANDARD SPRINGS.
 (3) LOADED HEIGHT AT SPRING RATING WITH STANDARD SPRINGS.
 (4) RV CONVERSION.
 (5) ADDITIONAL TIRE DATA, PAGE 71.

* — STATIC LOADED RADIUS REPRESENTS AXLE ϕ TO GROUND WITH MAXIMUM RATED LOAD ON TIRE AT MAXIMUM PRESSURE.

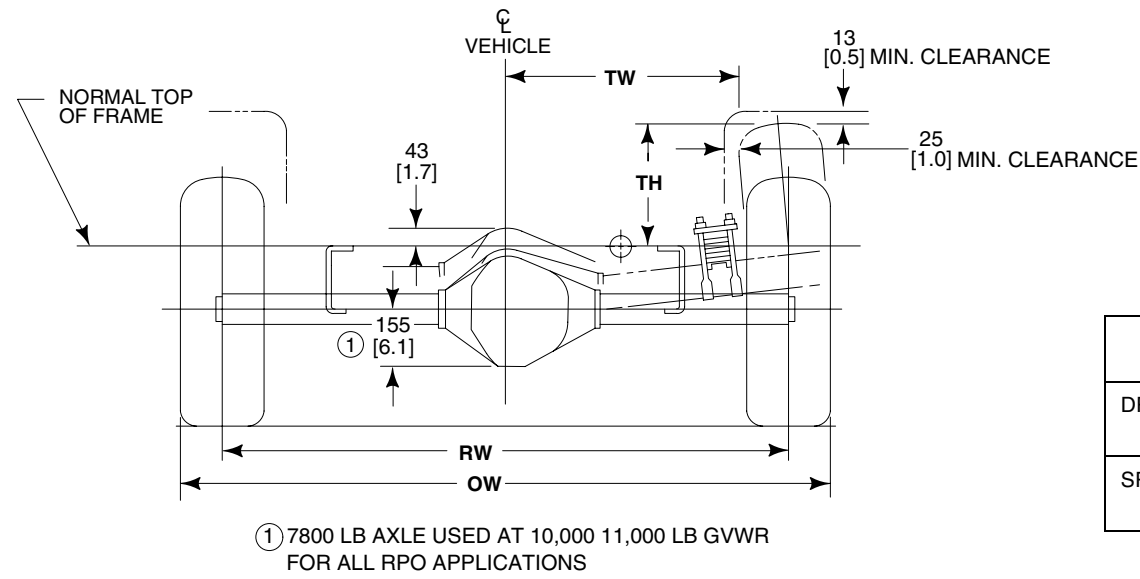
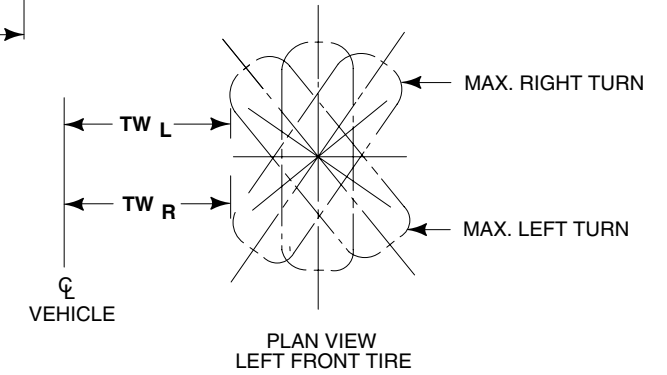
NOTES — [] DIMENSIONS ARE INCHES.
 — F/R - TO FRAME DATUM LINE 633.7 MM (24.95 INCHES);
 TO TOP OF FLOOR BEADS ADD 113.2 MM (4.46 INCHES).

E-350/450 SUPER DUTY CUTAWAY/CHASSIS CAB/ STRIPPED CHASSIS ALL WHEELBASE (SRW/DRW)

2004
MODEL YEAR



- ① 7800 LB AXLE USED AT 10,000 11,000 LB GVWR FOR RPO APPLICATIONS
- ② 8000 LB AXLE DSO USE ONLY
- ③ 9450 LB AXLE USED AT 14,050 LB GVWR FOR E 450



- ① 7800 LB AXLE USED AT 10,000 11,000 LB GVWR FOR ALL RPO APPLICATIONS

REAR SUSPENSION (SRW)
REAR VIEW

	TW ₁	TH ₁	TW _L	TW _R
DRW LT225/75R16E	655 [25.8]	302 [11.9]	549 [21.6]	521 [20.5]
SRW LT245/75R16E	655 [25.8]	320 [12.6]	549 [21.6]	521 [20.5]

TW = DISTANCE FROM ϕ OF VEHICLE TO SIDE OF TIRE IN MODIFIED JOUCE.
TH = DISTANCE FROM **NORMAL** TOP OF FRAME TO TOP OF TIRE IN MODIFIED JOUCE.

NOTES — [] DIMENSIONS ARE INCHES.
— REFER TO PAGE 63 FOR DETAIL INFORMATION ON FRAME EXTENSION METHOD.
— FOR DIMENSIONS NOT SHOWN, SEE PAGE 71.

VEHICLE HEIGHT DATA E-SERIES SUPER DUTY CUTAWAY/CHASSIS CAB/STRIPPED CHASSIS

2004
MODEL YEAR

MODEL	WB inches	GVWR pounds	MINIMUM TIRE	FRONT GAWR MIN/MAX pounds	F HEIGHT AT FRONT AXLE ⁽¹⁾			REAR GAWR MIN/MAX pounds	R HEIGHT AT REAR AXLE ⁽¹⁾			CH OVERALL HEIGHT OF VEHICLE (STANDARD SPRINGS) ⁽¹⁾ mm [in]	
					COMBINED FRONT SPRING CAPACITY RATE pounds	BASE CURB WEIGHT mm [in]	LOADED mm [in]		COMBINED REAR SPRING CAPACITY RATE pounds	BASE CURB WEIGHT mm [in]	LOADED mm [in]	CURB	LOADED
					STD SPRING	STD SPRING	STD SPRING		STD SPRING	STD SPRING	STD SPRING		
CUTAWAY													
E-350 SD	138	9600 ⁽²⁾	LT245/75R16E	3700/4600 ⁽³⁾	3700/4600 ⁽³⁾	574 [22.6]	545 [21.5]	6084	7810	666 [26.2]	598 [23.4]	2045 [80.5]	1981 [78.0]
		10,700	LT225/75R16E	3700/4600 ⁽³⁾	3700/4600 ⁽³⁾	556 [21.9]	528 [20.8]	7800	7810	648 [25.5]	580 [22.8]	2078 [81.8]	2019 [79.5]
		11,500 ⁽⁴⁾	LT225/75R16E	4050	4050	556 [21.9]	528 [20.8]	7800	7810	648 [25.5]	580 [22.8]	2078 [81.8]	2019 [79.5]
	158	11,500	LT225/75R16E	4050/4600 ⁽³⁾	4050/4600 ⁽³⁾	556 [21.9]	519 [20.4]	7800	7810	648 [25.5]	580 [22.8]	2108 [83.0]	2019 [79.5]
	176	11,500	LT225/75R16E	4050/4600 ⁽³⁾	4050/4600 ⁽³⁾	556 [21.9]	519 [20.4]	7800	7810	648 [25.5]	580 [22.8]	2103 [82.8]	2019 [79.5]
E-450 SD	158	14,050	LT225/75R16E	4600	4600	557 [21.9]	520 [20.5]	9450	9450	652 [25.7]	575 [22.6]	2108 [83.0]	2019 [79.5]
	176	14,050	LT225/75R16E	4600	4600	557 [21.9]	520 [20.5]	9450	9450	652 [25.7]	575 [22.6]	2108 [83.0]	2019 [79.5]

(1) The Height Data shown represents dimensions of a nominal vehicle with no options. Actual height may vary due to production tolerances.

(2) Single Rear Wheels.

(3) 4600 lb. Standard with Ambulance Prep Package.

(4) School Bus Prep Package.

VEHICLE HEIGHT DATA E-SERIES SUPER DUTY CUTAWAY/CHASSIS CAB/STRIPPED CHASSIS

2004
MODEL YEAR

MODEL	WB inches	GVWR pounds	MINIMUM TIRE	FRONT GAWR MIN/MAX pounds	F HEIGHT AT FRONT AXLE ⁽¹⁾			REAR GAWR MIN/MAX pounds	R HEIGHT AT REAR AXLE ⁽¹⁾			CH OVERALL HEIGHT OF VEHICLE (STANDARD SPRINGS) ⁽¹⁾ mm [in]	
					COMBINED FRONT SPRING CAPACITY RATE pounds	BASE CURB WEIGHT mm [in]	LOADED mm [in]		COMBINED REAR SPRING CAPACITY RATE pounds	BASE CURB WEIGHT mm [in]	LOADED mm [in]	CURB	LOADED
					STD SPRING	STD SPRING	STD SPRING		STD SPRING	STD SPRING	STD SPRING		
CHASSIS CAB													
E-350 SD	138	10,700	LT225/75R16E	3550/4400	3700/4400	556 [21.9]	528 [20.8]	7800	7810	648 [25.5]	580 [22.8]	2078 [81.8]	2019 [79.5]
	158	11,500	LT225/75R16E	4050/4600	4050/4600	556 [21.9]	519 [20.4]	7800	7810	648 [25.5]	580 [22.8]	2108 [83.0]	2019 [79.5]
	176	11,500	LT225/75R16E	4050/4600	4050/4600	556 [21.9]	519 [20.4]	7800	7810	648 [25.5]	580 [22.8]	2103 [82.8]	2019 [79.5]
E-450 SD	158	14,050	LT225/75R16E	4600	4600	557 [21.9]	520 [20.5]	9450	9450	652 [25.7]	575 [22.6]	2108 [83.0]	2019 [79.5]
	176	14,050	LT225/75R16E	4600	4600	557 [21.9]	520 [20.5]	9450	9450	652 [25.7]	575 [22.6]	2108 [83.0]	2019 [79.5]
STRIPPED CHASSIS													
E-350 SD	138	9600 ⁽²⁾	LT245/75R16E	3550/3800	3550/3900	—	545 [21.5]	6084	7810	—	598 [23.4]	—	—
		10,000	LT225/75R16E	3700/3800	3700/3900	—	528 [20.8]	7800	7810	—	580 [22.8]	—	—
	158	9600 ⁽²⁾	LT245/75R16E	3550/3800	3550/3800	—	545 [21.5]	6084	7810	—	598 [23.4]	—	—
		10,000	LT225/75R16E	3550/3800	3550/3800	—	519 [20.4]	7800	7810	—	580 [22.8]	—	—
		11,000	LT225/75R16E	3800/4200	3800/4200	—	519 [20.4]	7800	7810	—	580 [22.8]	—	—
	176	10,000	LT225/75R16E	3800/4050	3800/4050	—	519 [20.4]	7200	7810	—	580 [22.8]	—	—
11,000		LT225/75R16E	4050/4400	4050/4400	—	519 [20.4]	7800	7810	—	580 [22.8]	—	—	
E-450 SD	158	14,050	LT225/75R16E	4600	4600	—	520 [20.5]	9450	9450	—	575 [22.6]	—	—
	176	14,050	LT225/75R16E	4600	4600	—	520 [20.5]	9450	9450	—	576 [22.6]	—	—

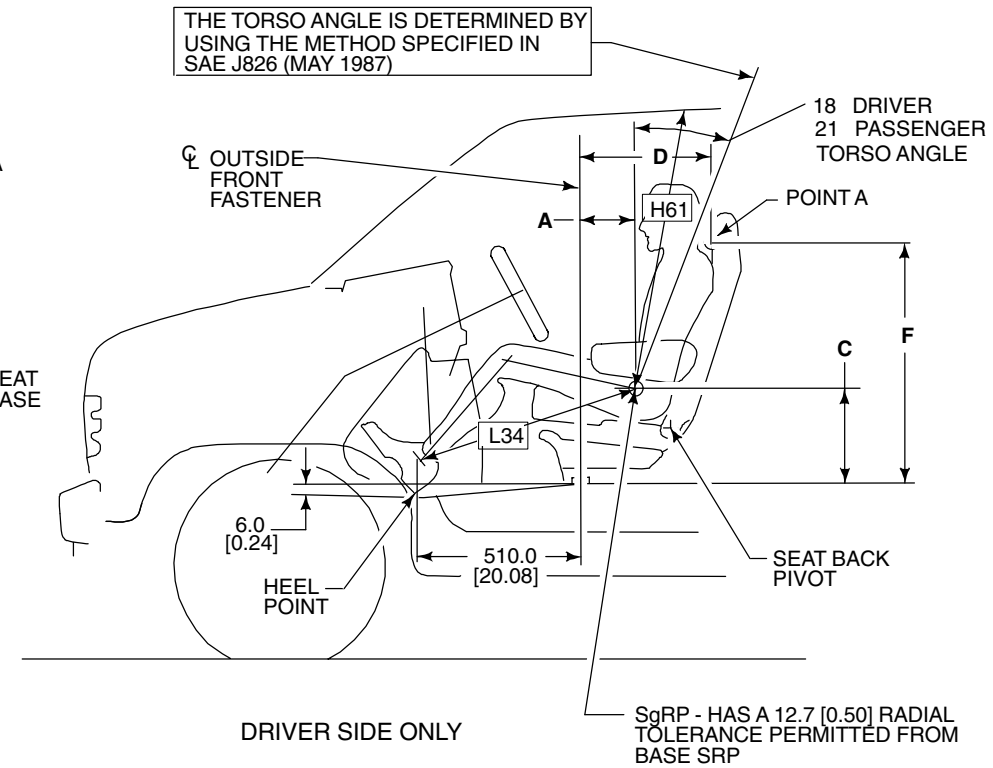
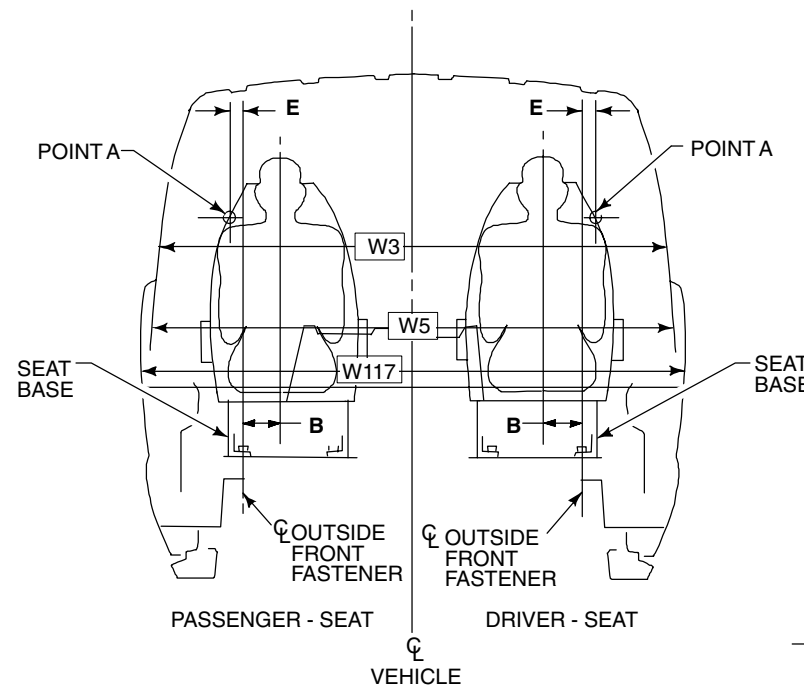
(1) The Height Data shown represents dimensions of a nominal vehicle with no options. Actual height may vary due to production tolerances.

(2) Single Rear Wheels.

DIMENSIONAL DATA

E-350/450 SUPER DUTY CUTAWAY/CHASSIS CAB

2004
MODEL YEAR



IMPORTANT:
THE DIMENSIONS IN THIS FIGURE REQUIRE THE VEHICLE TO BE AT DESIGN POSITION. E-SERIES VEHICLES AT DESIGN POSITION WILL BE LEVEL FRONT TO REAR, AND SIDE TO SIDE, ON THE UPPER SURFACE OF THE RIBBED FLOOR PANEL FROM THE B-PILLAR REARWARD.

BB0672

	SRP INFORMATION (SEAT POSITION IS 10.0 mm [0.39] FORWARD OF REARMOST POSITION)			POINT A (SEAT POSITION IS AT THE MIDPOINT OF AVAILABLE TRAVEL)		
	A	B	C	D	E	F
DRIVER - SEAT	217.8 [8.57]	105.0 [4.13]	384.2 [15.13]	356.0 [14.01]	67.0 [2.64]	937.4 [36.90]
PASSENGER - SEAT	277.3 [10.92]	103.0 [4.06]	377.0 [14.84]	412.0 [16.22]	65.0 [2.56]	960.1 [37.80]

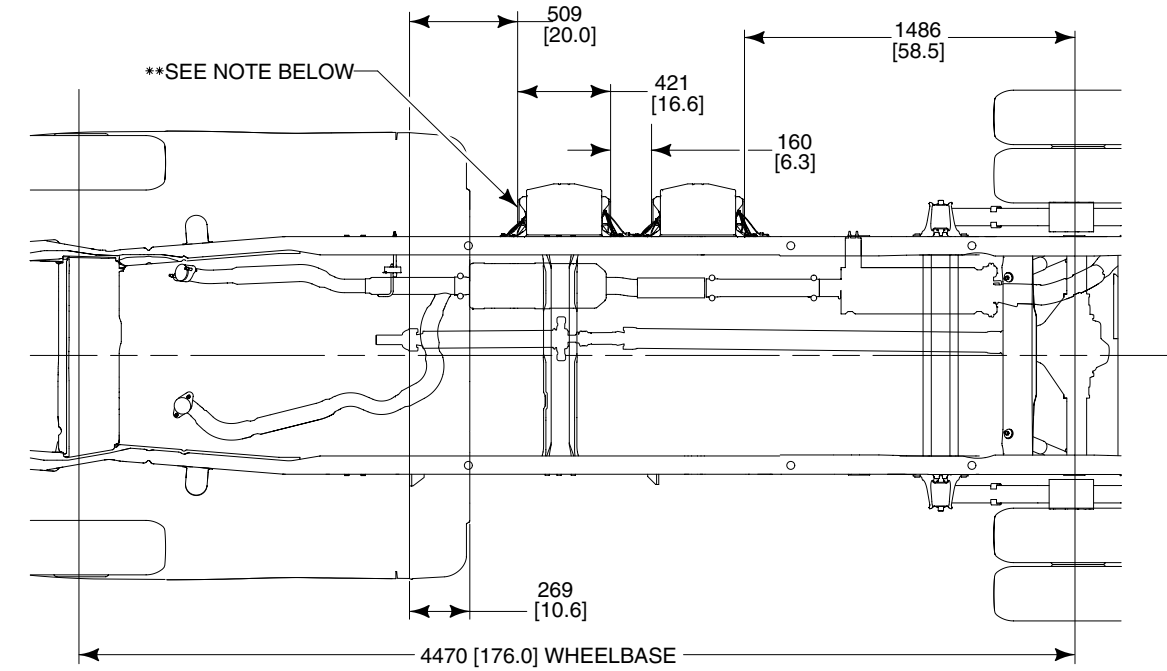
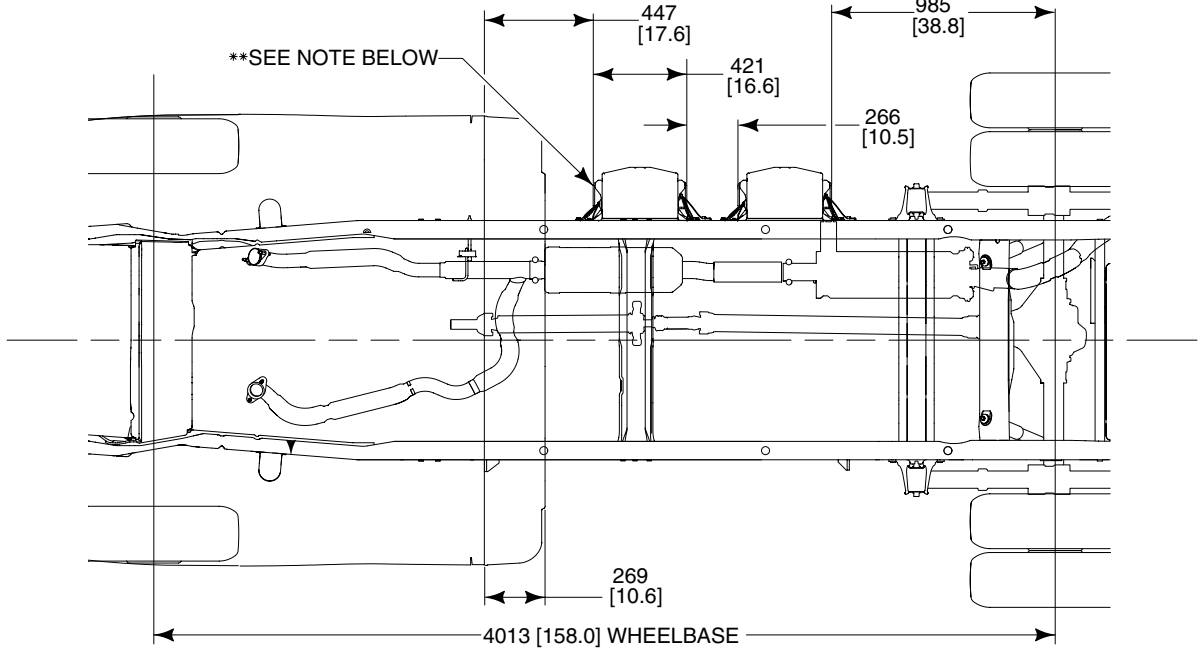
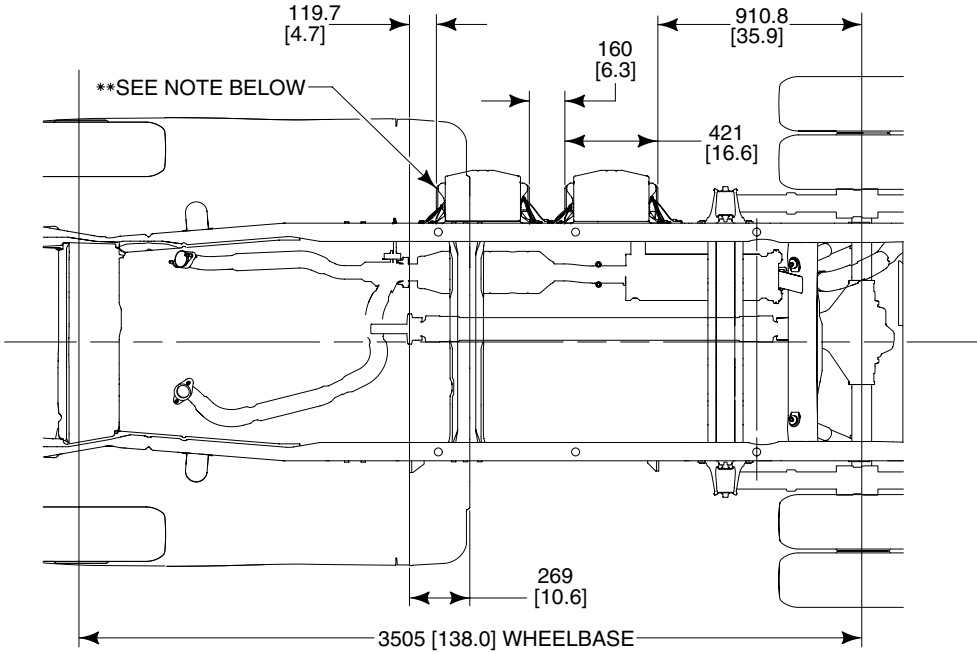
CODE	DESCRIPTION	
FRONT COMPARTMENT		
L34	MAXIMUM EFFECTIVE LEG ROOM - FRONT	1016 [40.0]
W3	SHOULDER ROOM - FRONT	1737 [68.4]
W5	HIP ROOM - FRONT	1666 [65.5]
W117	BODY WIDTH AT H-POINT	1999 [78.7]
H61	EFFECTIVE HEAD ROOM - FRONT	1069 [42.1]

NOTE — [] DIMENSIONS ARE INCHES.

E-350/450 6.0L DUAL AND GAS AUXILIARY BATTERY BOX LOCATIONS

2004
MODEL YEAR

E-SERIES



- The guidelines below must be followed when repositioning the battery box
- Maintain attachment hole diameter of (12 mm)
 - Maintain use of existing OEM bolts (M10)
 - The battery box must NOT be packaged any lower in vehicle position than is provided by Ford
 - All new frame holes must be at least 1x hole diameter away from all other holes & 1½ diameter away from the edge of a radius tangent
 - Battery boxes may not be moved rearward of position provided by Ford

BB0016-2004

NOTES — [] DIMENSIONS ARE INCHES.
— ** PLACEMENT FOR GAS ENGINES AUXILIARY BATTERY OPTION

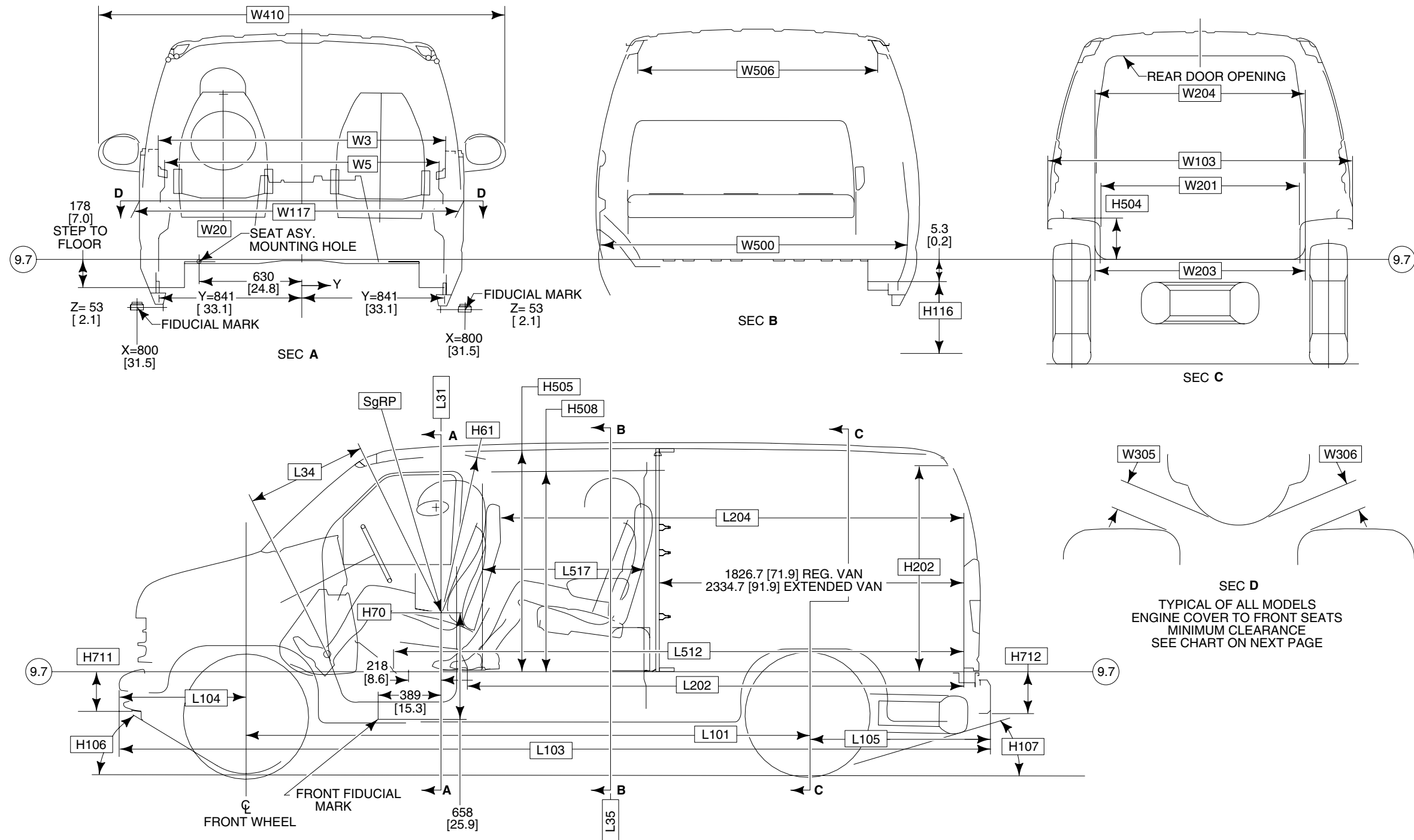
DIMENSIONAL DATA

E-150/250/350 SUPER DUTY

CREW VAN – REGULAR/EXTENDED LENGTH

2004
MODEL YEAR

E-SERIES



BB0544 2004

NOTES — [] DIMENSIONS ARE INCHES.
 — CH, LH, F, R, FW, RW DIMENSIONS, PAGE 54.
 — SEAT TRACK TRAVEL, PAGE 78.

DIMENSIONAL DATA

E-150/250/350 SUPER DUTY

CREW VAN – REGULAR/EXTENDED LENGTH

2004
MODEL YEAR

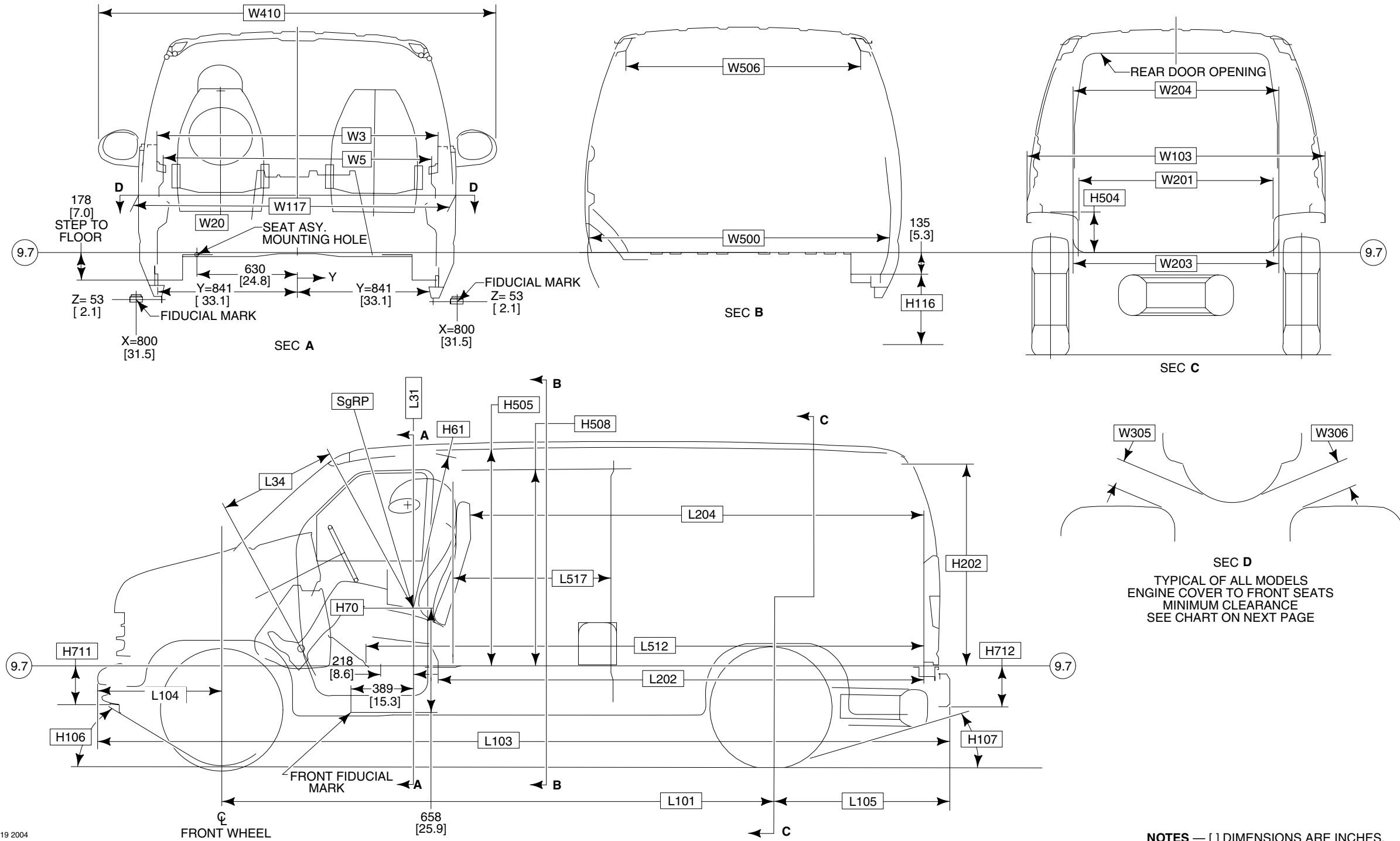
CODE	DESCRIPTION	REGULAR LENGTH BASE BUCKET 5-PASS CARGO DOOR	EXTENDED LENGTH BASE BUCKET 5-PASS CARGO DOOR
EXTERIOR			
H106	ANGLE OF APPROACH	26.7°	32.0°
H107	ANGLE OF DEPARTURE	19.3°	15.5°
H711	FRAME DATUM LINE TO BOTTOM OF FRONT BUMPER	206 [8.1]	206 [8.1]
H712	FRAME DATUM LINE TO BOTTOM OF REAR BUMPER	256 [10.1]	256 [10.1]
L101	WHEELBASE	3506 [138.0]	3508 [138.1]
L103	OVERALL LENGTH	5381 [211.8]	5889 [231.8]
L104	OVERHANG – FRONT	762 [30.0]	762 [30.0]
L105	OVERHANG – REAR	1114 [43.8]	1619 [63.7]
W103	VEHICLE WIDTH	2014 [79.3]	2014 [79.3]
W117	BODY WIDTH AT H-POINT	1998 [78.7]	1998 [78.7]
W410	SAIL MOUNT – MANUAL/POWER MIRROR	2434 [93.9]	2434 [93.9]
	TRAILER TOW MIRROR / EXTENDED	2605 [102.5]/ 2753 [108.4]	2605 [102.5]/ 2753 [108.4]
FRONT COMPARTMENT			
H61	EFFECTIVE HEAD ROOM – FRONT	1069 [42.1]	1069 [42.1]
H70	SgPR – LH/RH – FRONT (Z)	604 [23.8] 597 [23.5]	604 [23.8] 597 [23.5]
L31	SgPR – LH/RH – FRONT (X)	1188 [46.8]/ 1211 [47.7]	1188 [46.8]/ 1211 [47.7]
L34	MAXIMUM EFFECTIVE LEG ROOM – FRONT	1015 [40.0]	1015 [40.0]
W3	SHOULDER ROOM – FRONT	1728 [68.0]	1729 [68.1]
W5	HIP ROOM – FRONT	1670 [65.7]	1670 [65.7]
W20	SgRP – LH/RH – FRONT (Y)	-518 [-20.4]/ 518 [20.4]	-518 [-20.4]/ 518 [20.4]
W305	SEAT TO ENGINE COVER – DRIVER	186 [7.3]	186 [7.3]
W306	SEAT TO ENGINE COVER – PASSENGER	168 [6.6]	168 [6.6]

CODE	DESCRIPTION	REGULAR LENGTH BASE BUCKET 5-PASS CARGO DOOR	EXTENDED LENGTH BASE BUCKET 5-PASS CARGO DOOR
REAR COMPARTMENT – SEATING			
H63	EFFECTIVE HEAD ROOM – 2ND	1019 [40.1]	1019 [40.1]
H71	SgRP 2ND LEFT/CENTER (Z)	665 [26.2]/ 665 [26.2]	665 [26.2]/ 665 [26.2]
L35	SgRP 2ND LEFT/CENTER (X)	2032 [80.0]	2032 [80.0]
L50	H-POINT COUPLE DISTANCE	844 [33.2]	844 [33.2]
L51	EFFECTIVE LEG ROOM – 2ND	966 [38.0]	966 [38.0]
W4	SHOULDER ROOM – 2ND	1791 [70.5]	1791 [70.5]
W6	HIP ROOM – 2ND ARMREST DOWN/UP	1417 [55.8]/ 1688 [66.5]	1417 [55.8]/ 1688 [66.5]
W8	SEATING WIDTH – 2ND	1350 [53.2]	1350 [53.2]
W25	SgRP 2ND LEFT/CENTER (Y)	-545 [-21.4]/ -100 [-3.9]	-545 [-21.4]/ -100 [-3.9]
REAR COMPARTMENT – CARGO			
H504	WHEELHOUSE HEIGHT	236 [9.3]	240 [9.5]
H505	CARGO HEIGHT – MAXIMUM	1368 [53.9]	1368 [53.9]
L202	CARGO LENGTH – CLOSED FRONT	3064 [120.6]	3581 [141.0]
L204	CARGO LENGTH AT BELT – FRONT	2886 [113.6]	3394 [133.6]
L512	CARGO LENGTH TO ENGINE COVER	3511 [138.2]	4019 [158.2]
W201	CARGO WIDTH BETWEEN WHEELHOUSE	1330 [52.3]	1330 [52.3]
W500	CARGO BODY WIDTH AT FLOOR	1763 [69.4]	1763 [69.4]
W506	CARGO WIDTH AT ROOF RAIL	1559 [61.4]	1559 [61.4]
V16	CARGO VOLUME – REAR OF PARTITION LITERS/CU.FT.	3805.7/134.4	4872.7/172.1
DOOR OPENINGS (ENTRANCE ROOM)			
H116	STEP HEIGHT – 2ND	458 [18.0]	522 [20.6]
H202	REAR OPENING HEIGHT	1202 [47.3]	1244 [49.0]
H508	ENTRANCE HEIGHT – CARGO SIDE	1226 [48.3]	1226 [48.3]
L517	ENTRANCE LENGTH – CARGO SIDE	1196 [47.1]	1196 [47.1]
W203	REAR OPENING WIDTH AT FLOOR	1381 [54.4]	1381 [54.4]
W204	REAR OPENING WIDTH AT BELT	1382 [54.4]	1382 [54.4]

NOTE — [] DIMENSIONS ARE INCHES.

DIMENSIONAL DATA E-150/250/350 SUPER DUTY VAN

2004
MODEL YEAR



BB0019 2004

NOTES — [] DIMENSIONS ARE INCHES.
 — CH, LH, F, R, FW AND RW, PAGE 54.
 — SEAT TRACK TRAVEL, PAGE 78.

DIMENSIONAL DATA

E-150/250/350 SUPER DUTY VAN

2004
MODEL YEAR

CODE	DESCRIPTION	REGULAR VAN BASE BUCKET 2-PASS SLIDING DOOR	REGULAR VAN BASE BUCKET 2-PASS CARGO DOOR	SUPER VAN CAPTAIN'S CHAIR 2-PASS CARGO DOOR
EXTERIOR				
H106	ANGLE OF APPROACH	26.7°	26.7°	32.0°
H107	ANGLE OF DEPARTURE	19.3°	19.3°	15.5°
H711	FRAME DATUM LINE TO BOTTOM OF FRONT BUMPER	—	206 [8.1]	—
H712	FRAME DATUM LINE TO BOTTOM OF REAR BUMPER	—	256 [10.1]	—
L101	WHEELBASE	3506 [138.0]	3506 [138.0]	3508 [138.1]
L103	OVERALL LENGTH	5381 [211.8]	5382 [211.9]	5889 [231.8]
L104	OVERHANG — FRONT	762 [30.0]	764 [30.1]	762 [30.0]
L105	OVERHANG — REAR	1114 [43.8]	1112 [43.8]	1619 [63.7]
W103	VEHICLE WIDTH	2014 [79.3]	2014 [79.3]	2014 [79.3]
W117	BODY WIDTH AT H-POINT	1998 [78.7]	1999 [78.7]	1998 [78.7]
W410	SAIL MOUNT — MANUAL/POWER	2434 [93.9]	2434 [93.9]	2434 [93.9]
	TRAILER TOW MIRROR /EXTENDED	2605 [102.5]/ 2753 [108.4]	2605 [102.5]/ 2753 [108.4]	2605 [102.5]/ 2753 [108.4]
FRONT COMPARTMENT				
H61	EFFECTIVE HEAD ROOM — FRONT	1069 [42.1]	1079 [42.1]	1069 [42.1]
H70	SgRP — LH/RH — FRONT (Z)	1104 [23.8]	604 [23.8]/ 597 [23.5]	1104 [23.8]
L31	SgRP — LH/RH — FRONT (X)	1189 [46.8]/ 1211 [49.1]	1189 [46.8]/ 1247 [49.1]	1189 [46.8]/ 1211 [49.1]
L34	MAXIMUM EFFECTIVE LEG ROOM SgRP — FRONT	1015 [40.0]	1016 [40.0]	1015 [40.0]
W3	SHOULDER ROOM SgRP — FRONT	1729 [68.1]	1737 [68.4]	1729 [68.1]
W5	HIP ROOM — FRONT	1670 [65.7]	1670 [65.7]	1670 [65.7]
W20	SgRP — LH/RH — FRONT (Y)	-518 [-20.4]/ 518 [20.4]	-518 [-20.4]/ 518 [20.4]	-518 [-20.4]/ 518 [20.4]
W305	SEAT TO ENGINE COVER — DRIVER	133 [5.2]	186 [7.3]	186 [7.3]
W306	SEAT TO ENGINE COVER — PASSENGER	131 [5.2]	168 [6.6]	168 [6.6]

CODE	DESCRIPTION	REGULAR VAN BASE BUCKET 2-PASS SLIDING DOOR	REGULAR VAN BASE BUCKET 2-PASS CARGO DOOR	SUPER VAN CAPTAIN'S CHAIR 2-PASS CARGO DOOR
REAR COMPARTMENT — CARGO				
H504	WHEELHOUSE HEIGHT	236 [9.3]	241 [9.5]	241 [9.5]
H505	CARGO HEIGHT — MAXIMUM	1339 [52.7]	1333 [52.2]	1368 [53.9]
L202	CARGO LENGTH — CLOSED FRONT	3064 [120.6]	3061 [120.5]	3581 [141.0]
L204	CARGO LENGTH AT BELT — FRONT	2886 [113.6]	2857 [112.5]	3394 [133.6]
L512	CARGO LENGTH TO ENGINE COVER	3511 [138.2]	3711 [146.1]	4019 [158.2]
W201	CARGO WIDTH BETWEEN WHEELHOUSE	1312 [51.6]	1341 [52.8]	1330 [52.3]
W500	CARGO BODY WIDTH AT FLOOR	1796 [70.7]	1839 [72.4]	1763 [69.4]
W506	CARGO WIDTH AT ROOF RAIL	1559 [61.4]	1559 [61.4]	1559 [61.4]
V16	CARGO VOLUME — REAR OF FRONT SEAT WHICH IS IN ITS FORWARD MOST ADJUSTMENT — CU.FT.	252.5	256.5	297.1
DOOR OPENINGS (ENTRANCE ROOM)				
H116	STEP HEIGHT — 2ND	458 [18.0]	458 [18.0]	522 [20.6]
H202	REAR OPENING HEIGHT	1202 [47.3]	1227 [48.3]	1244 [49.0]
H508	ENTRANCE HEIGHT — CARGO SIDE	1206 [47.5]	1227 [48.3]	1226 [48.3]
L517	ENTRANCE LENGTH — CARGO SIDE	1006 [39.6]	1196 [47.1]	1196 [47.1]
W203	REAR OPENING WIDTH AT FLOOR	1386 [54.6]	1305 [51.4]	1381 [54.4]
W204	REAR OPENING WIDTH AT BELT	1382 [54.4]	1382 [54.4]	1382 [54.4]

NOTE — [] DIMENSIONS ARE INCHES.

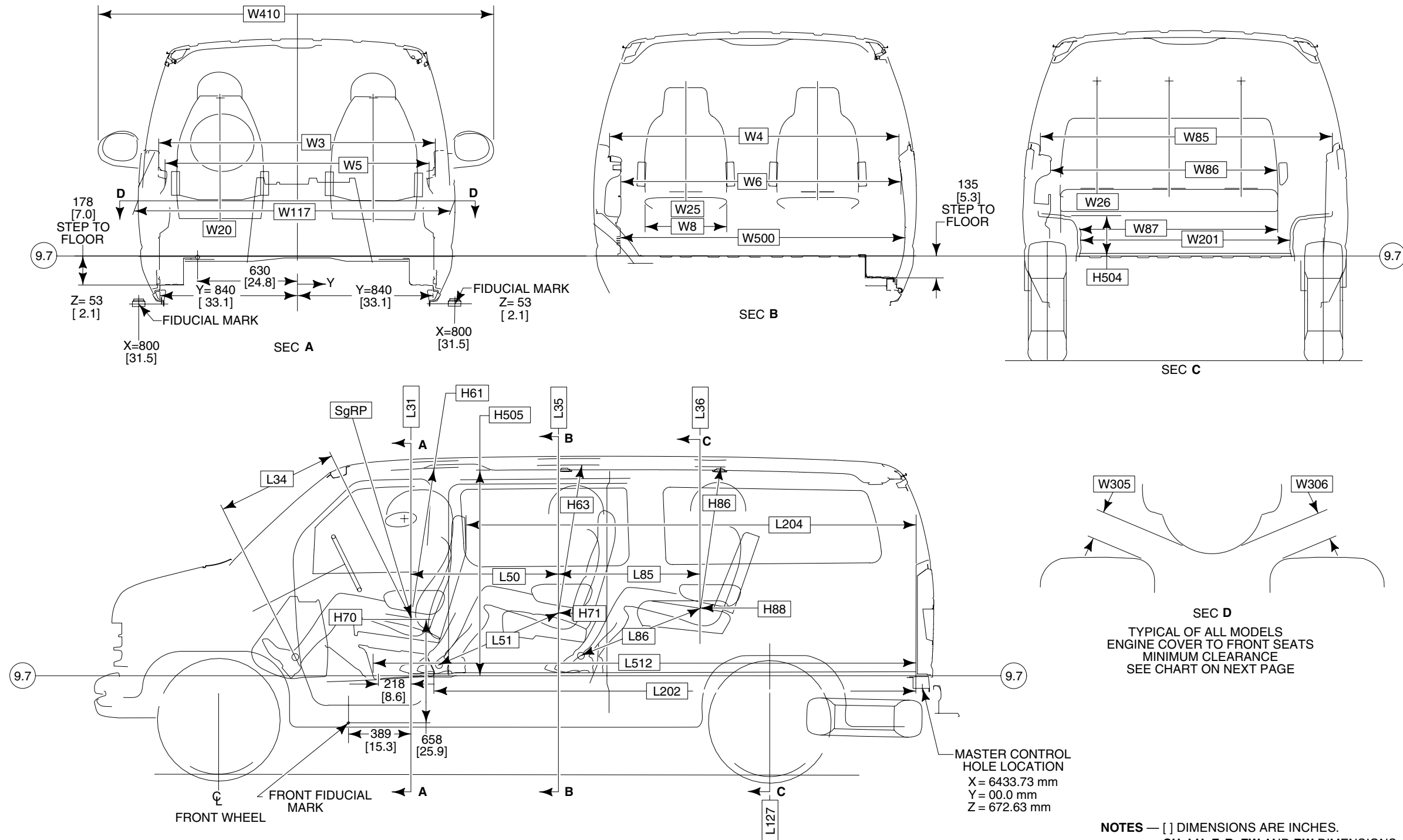
DIMENSIONAL DATA

E-150/E-350 SUPER DUTY WAGON 7-PASSENGER

2004
MODEL YEAR

Page 44

E-SERIES



DIMENSIONAL DATA

E-150/E-350 SUPER DUTY WAGON 7-PASSENGER QUAD CAPTAIN'S CHAIRS/3-PASSENGER BENCH

2004
MODEL YEAR

Page 45

E-SERIES

CODE	DESCRIPTION	7-PASSENGER QUAD CAPTAIN'S CHAIRS/ 3-PASSENGER BENCH
FRONT COMPARTMENT		
H61	EFFECTIVE HEAD ROOM – FRONT	1069 [42.1]
H70	SgRP FRONT LH/RH (Z)	604 [23.8]/ 597 [23.5]
L31	SgRP FRONT LG/RH (X)	1189 [46.8]/ 1211 [47.7]
L34	MAXIMUM EFFECTIVE LEG ROOM	1016 [40.0]
W3	SHOULDER ROOM – FRONT	1728 [68.0]
W5	HIP ROOM – FRONT	1670 [65.7]
W20	SgRP FRONT LH/RH (Y)	-518 [-20.4]/ 518 [20.4]
W117	BODY WIDTH AT H-POINT	1998 [78.7]
W305	SEAT TO ENGINE COVER – DRIVER	133 [5.24]
W306	SEAT TO ENGINE COVER – PASSENGER	131 [5.17]
W410	SAIL MOUNT – MANUAL/POWER	2434 [93.9]
	TRAILER TOW MIRROR / EXTENDED	2650 [102.5]/ 2753 [108.4]
REAR COMPARTMENT – CARGO		
H504	WHEELHOUSE HEIGHT	236 [9.3]
H505	CARGO HEIGHT – MAXIMUM	1339 [52.7]
L202	CARGO LENGTH – CLOSED FRONT	3064 [120.6]
L204	CARGO LENGTH AT BELT – FRONT	2886 [113.6]
L512	CARGO LENGTH TO ENGINE COVER	3511 [138.2]
W201	CARGO WIDTH BETWEEN WHEELHOUSE	1297 [51.1]
W500	CARGO BODY WIDTH AT FLOOR	1686 [66.4]
V6	CARGO VOLUME – REAR OF FRONT SEAT – CU. FT.	237.1

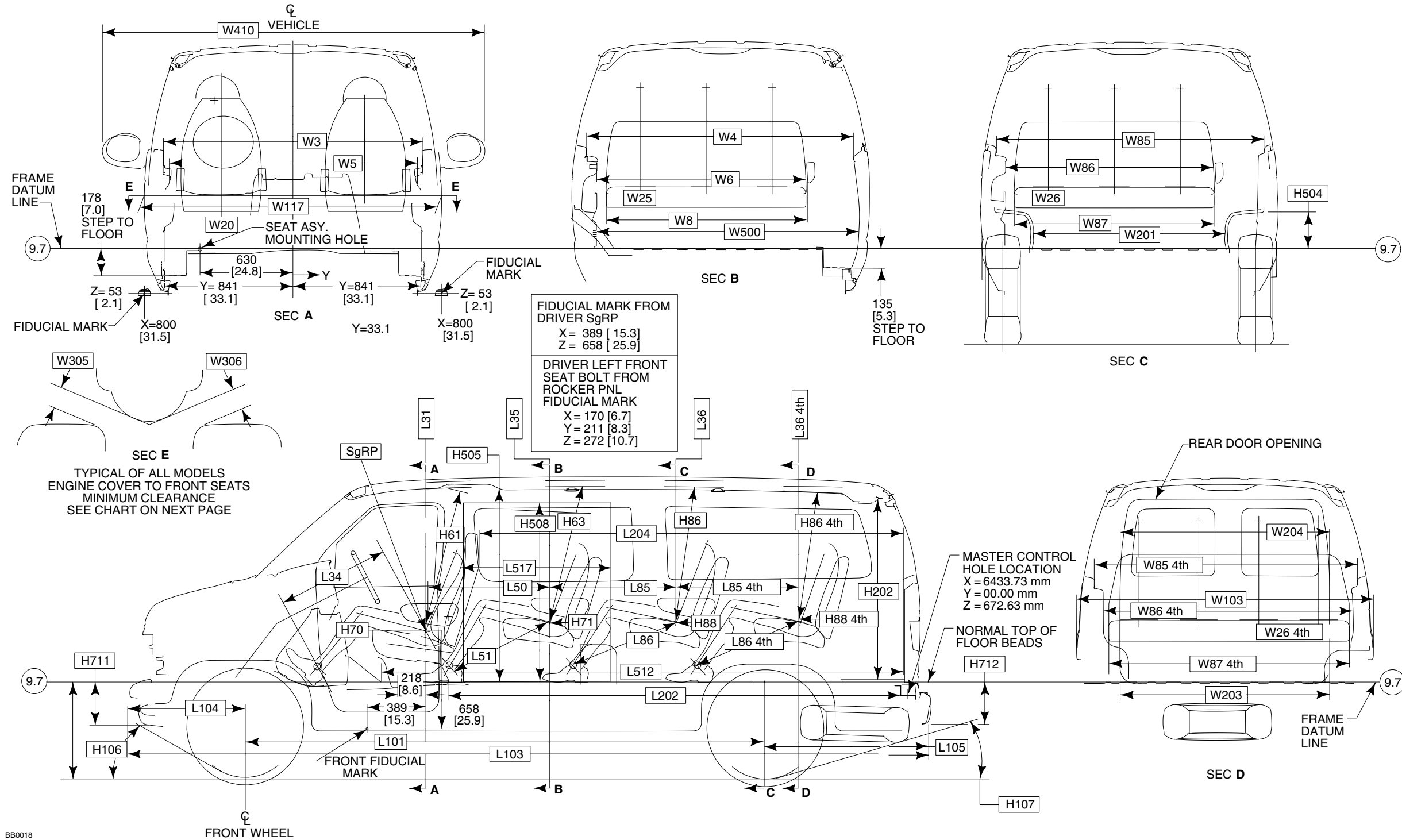
CODE	DESCRIPTION	7-PASSENGER QUAD CAPTAIN'S CHAIRS/ 3-PASSENGER BENCH
REAR COMPARTMENT – SEATING		
H63	EFFECTIVE HEAD ROOM – 2ND	1045 [41.1]
H71	SgRP – 2ND (Z)	650 [25.6]
H86	EFFECTIVE HEAD ROOM – 3RD	1017 [40.4]
H88	SgRP – 3RD (Z)	665 [26.2]
L35	SgRP – 2ND (X)	2098 [82.6]
L36	SgRP – 3RD (X)	3020 [118.9]
L50	H-POINT COUPLE DISTANCE	910 [35.8]
L51	EFFECTIVE LEG ROOM – 2ND	1031 [40.6]
L85	SgRP COUPLE DISTANCE – 3RD	923 [36.4]
L86	LEG ROOM – 3RD	1083 [42.6]
W4	SHOULDER ROOM – 2ND	1852 [72.9]
W6	HIP ROOM – 2ND – ARMREST UP/DOWN	1745 [68.7]/ 1417 [55.8]
W8	SEATING WIDTH – 2ND	511 [20.1]
W25	SgRP – 2ND LH (Y)	-435 [-17.1]
W26	SgRP – 3RD LH (Y)	-545 [-21.4]
W85	SHOULDER ROOM – 3RD	1801 [70.9]
W86	HIP ROOM – 3RD – ARMREST UP/DOWN	1710 [67.3]/ 1415 [55.7]
W87	SEATING WIDTH	1348 [53.1]

NOTE — [] DIMENSIONS ARE INCHES.

DIMENSIONAL DATA

E-150/350 SUPER DUTY WAGON 8/12-PASSENGER

2004
MODEL YEAR



NOTES — [] DIMENSIONS ARE INCHES.
 — CH, LH, F, R, FW AND RW, PAGE 54.
 — SEAT TRACK TRAVEL, PAGE 78.

DIMENSIONAL DATA

E-150/350 SUPER DUTY WAGON 8/12-PASSENGER

2004
MODEL YEAR

Page 47

E-SERIES

CODE	DESCRIPTION	BASE BUCKET 8-PASS CARGO DOOR	BASE BUCKET 12-PASS SLIDING DOOR	CAPTAIN'S CHAIR 8-PASS SLIDING DOOR	CAPTAIN'S CHAIR 12-PASS SLIDING DOOR
EXTERIOR					
H106	ANGLE OF APPROACH	26.7°	29.2°	26.7°	29.2°
H107	ANGLE OF DEPARTURE	19.3°	14.3°	19.3°	14.3°
H711	FRAME DATUM LINE TO BOTTOM OF FRONT BUMPER	206 [8.1]	206 [8.1]	206 [8.1]	206 [8.1]
H712	FRAME DATUM LINE TO BOTTOM OF REAR BUMPER	256 [10.1]	256 [10.1]	256 [10.1]	256 [10.1]
L101	WHEELBASE	3506 [138.0]	3506 [138.0]	3506 [138.0]	3506 [138.0]
L103	OVERALL LENGTH	5381 [211.8]	5381 [211.8]	5381 [211.8]	5381 [211.8]
L104	OVERHANG — FRONT	762 [30.0]	762 [30.0]	762 [30.0]	762 [30.0]
L105	OVERHANG — REAR	1114 [43.8]	1114 [43.8]	1114 [43.8]	1113 [43.8]
W103	VEHICLE WIDTH	2014 [79.3]	2014 [79.3]	2014 [79.3]	2014 [79.3]
W117	BODY WIDTH AT H-POINT	1998 [78.7]	1998 [78.7]	1998 [78.7]	1998 [78.7]
W410	SAIL MOUNT — MANUAL/POWER MIRROR	2389 [94.0]	2434 [93.9]	2241 [88.2]	2203 [86.7]
	TRAILER TOW MIRROR / EXTENDED	2605 [102.5]/ 2753 [108.4]	2605 [102.5]/ 2753 [108.4]	2605 [102.5]/ 2753 [108.4]	2605 [102.5]/ 2753 [108.4]
FRONT COMPARTMENT					
H61	EFFECTIVE HEAD ROOM — FRONT	1069[42.1]	1069[42.1]	1069 [42.1]	1069 [42.1]
H70	SgRP FRONT LEFT/RIGHT (Z)	604 [23.8]/ 597 [23.5]	604 [23.8]/ 597 [23.5]	604 [23.8]/ 597 [23.5]	604 [23.8]/ 597 [23.5]
L31	SgRP FRONT LEFT/RIGHT (X)	1188 [46.8]/ 1211 [47.7]	1188 [46.8]/ 1211 [47.7]	1188 [46.8]/ 1211 [47.7]	1188 [46.8]/ 1211 [47.7]
L34	MAXIMUM EFFECTIVE LEG ROOM	1015 [40.0]	1015 [40.0]	1015 [40.0]	1015 [40.0]
W3	SHOULDER ROOM — FRONT	1728 [68.0]	1728 [68.0]	1728 [68.0]	1728 [68.0]
W5	HIP ROOM — FRONT	1670 [65.7]	1670 [65.7]	1670 [65.7]	1670 [65.7]
W20	SgRP FRONT LEFT/RIGHT (Y)	-518 [-20.4]/ 518 [20.4]	-518 [-20.4]/ 518 [20.4]	-518 [-20.4]/ 518 [20.4]	-518 [-20.4]/ 518 [20.4]
W305	SEAT TO ENGINE COVER — DRIVER	186 [7.3]	186 [7.3]	133 [5.2]	133 [5.2]
W306	SEAT TO ENGINE COVER — PASSENGER	168 [6.6]	168 [6.6]	131 [5.2]	131 [5.2]
REAR COMPARTMENT — CARGO					
H504	WHEELHOUSE HEIGHT	236 [9.3]	236 [9.3]	236 [9.3]	236 [9.3]
H505	CARGO HEIGHT — MAXIMUM	1339 [52.7]	1339 [52.7]	1339 [52.7]	1339 [52.7]
L202	CARGO LENGTH — CLOSED FRONT	3064 [120.6]	3064 [120.6]	3064 [120.6]	3064 [120.6]
L204	CARGO LENGTH AT BELT — CLOSED FRONT	2886 [113.6]	2886 [113.6]	2886 [113.6]	2886 [113.6]
L512	CARGO LENGTH TO ENGINE COVER	3511 [138.2]	3511 [138.2]	3511 [138.2]	3511 [138.2]
W201	CARGO WIDTH BETWEEN WHEELHOUSE	1297 [51.1]	1297 [51.1]	1297 [51.1]	1297 [51.1]
W500	CARGO BODY WIDTH AT FLOOR	1741 [68.6]	1741 [68.6]	1796 [70.7]	1796 [70.7]
V16	CARGO VOLUME — REAR OF FRONT SEAT - CU.FT.	236.2	236.2	234.9	234.9

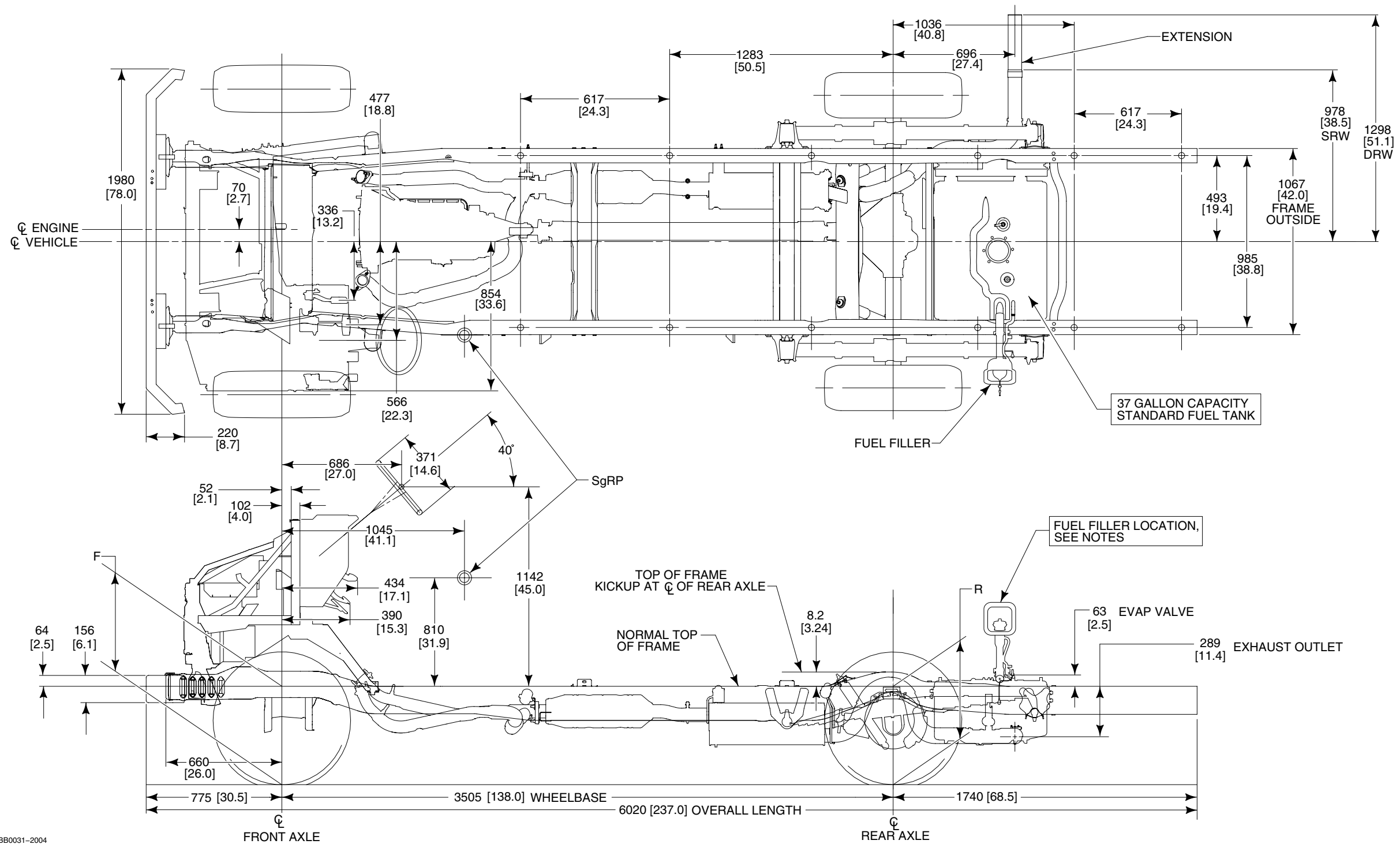
CODE	DESCRIPTION	BASE BUCKET 8-PASS CARGO DOOR	BASE BUCKET 12-PASS SLIDING DOOR	CAPTAIN'S CHAIR 8-PASS SLIDING DOOR	CAPTAIN'S CHAIR 12-PASS SLIDING DOOR
REAR COMPARTMENT — SEATING					
H63	EFFECTIVE HEAD ROOM — 2ND	1019 [40.1]	1019 [40.1]	1019 [40.1]	1019 [40.1]
H71	SgRP 2ND LEFT/CENTER (Z)	665 [26.2]/ 665 [26.2]	665 [26.2]/ 665 [26.2]	665 [26.2]/ 665 [26.2]	665 [26.2]/ 665 [26.2]
H86	EFFECTIVE HEAD ROOM — 3RD	1019 [40.1]	1019 [40.1]	1019 [40.1]	1019 [40.1]
H86-4TH	EFFECTIVE HEAD ROOM — 4TH	—	962 [37.9]	—	962 [37.9]
H88	SgRP 3RD (Z)	665 [26.2]	665 [26.2]	665 [26.2]	665 [26.2]
H88-4TH	SgRP 4TH (Z)	—	665 [26.2]	—	665 [26.2]
L35	SgRP 2ND LEFT/CENTER (X)	2032[80.0]/ 2032 [80.0]	2032[80.0]/ 2032 [80.0]	2032[80.0]/ 2032 [80.0]	2032[80.0]/ 2032 [80.0]
L36	SgRP 3RD (X)	2883 [113.5]	2883 [113.5]	2883 [113.5]	2883 [113.5]
L36-4TH	SgRP 4TH (X)	—	3718 [146.4]	—	3718 [146.4]
L50	H-POINT COUPLE DISTANCE	844 [33.2]	844 [33.2]	844 [33.2]	844 [33.2]
L51	EFFECTIVE LEG ROOM — 2ND	966 [38.0]	937 [36.9]	1023 [40.3]	927 [36.5]
L85	SgRP COUPLE DISTANCE — 3RD	851 [33.5]	851 [33.5]	851 [33.5]	851 [33.5]
L85-4TH	SgRP COUPLE DISTANCE — 4TH	—	837 [32.9]	—	837 [32.9]
L86	EFFECTIVE LEG ROOM — 3RD	1046 [41.2]	1046 [41.2]	1046 [41.2]	1046 [41.2]
L86-4TH	EFFECTIVE LEG ROOM — 4TH	—	1033 [40.7]	—	1033 [40.7]
W4	SHOULDER ROOM — 2ND	1791 [70.5]	1791 [70.5]	1800 [70.9]	1800 [70.9]
W6	HIP ROOM — 2ND ARMREST DOWN/UP	1417 [55.8]/ 1688 [66.5]	1417 [55.8]/ 1688 [66.5]	1417 [55.8]/ 1744 [68.7]	1417 [55.8]/ 1744 [68.7]
W8	SEATING WIDTH — 2ND	1350 [53.2]	1350 [53.2]	1350 [53.2]	1350 [53.2]
W25	SgRP 2ND LEFT/CENTER (Y)	-545 [-21.4]/ -100 [-3.9]	-545 [-21.4]/ -100 [-3.9]	-545 [-21.4]/ -100 [-3.9]	-545 [-21.4]/ -100 [-3.9]
W26	SgRP 3RD LEFT/CENTER (Y)	-545 [-21.4]/ -99 [-3.9]	-545 [-21.4]/ -99 [-3.9]	545 [-21.4]/ -99 [-3.9]	-545 [-21.4]/ -99 [-3.9]
W26-4TH	SgRP 4TH — RIGHT OUTSIDE (Y)	—	631 [24.9]	—	631 [24.9]
W85	SHOULDER ROOM — 3RD	1808 [71.2]	1808 [71.2]	1808 [71.2]	1808 [71.2]
W85-4TH	SHOULDER ROOM — 4TH	—	1770 [69.7]	—	1770 [69.7]
W86	HIP ROOM — 3RD ARMREST DOWN/UP	1415 [55.7]/ 1698 [66.9]	1415 [55.7]/ 1698 [66.9]	1415 [55.7]/ 1698 [66.9]	1415 [55.7]/ 1698 [66.9]
W86-4TH	HIP ROOM — 4TH	—	1684 [66.3]	—	1684 [66.3]
W87	SEATING WIDTH — 3RD	1350 [53.2]	1350 [53.2]	1350 [53.2]	1350 [53.2]
W87-4TH	SEATING WIDTH — 4TH	—	1623 [63.9]	—	1623 [63.9]
DOOR OPENINGS (ENTRANCE ROOM)					
H202	REAR OPENING HEIGHT	1202 [47.3]	1202 [47.3]	1202 [47.3]	1202 [47.3]
H508	ENTRANCE HEIGHT — CARGO SIDE	1206 [47.5]	1206 [47.5]	1206 [47.5]	1206 [47.5]
L517	ENTRANCE LENGTH — CARGO SIDE	1196 [47.1]	1006 [39.6]	1006 [39.6]	1006 [39.6]
W203	REAR OPENING WIDTH @ FLOOR	1386 [54.6]	1386 [54.6]	1386 [54.6]	1386 [54.6]
W204	REAR OPENING WIDTH AT BELT	1382 [54.4]	1382 [54.4]	1382 [54.4]	1382 [54.4]

NOTE — [] DIMENSIONS ARE INCHES.

E-350 SUPER DUTY STRIPPED CHASSIS 138" WHEELBASE (SRW/DRW)

2004
MODEL YEAR

E-SERIES



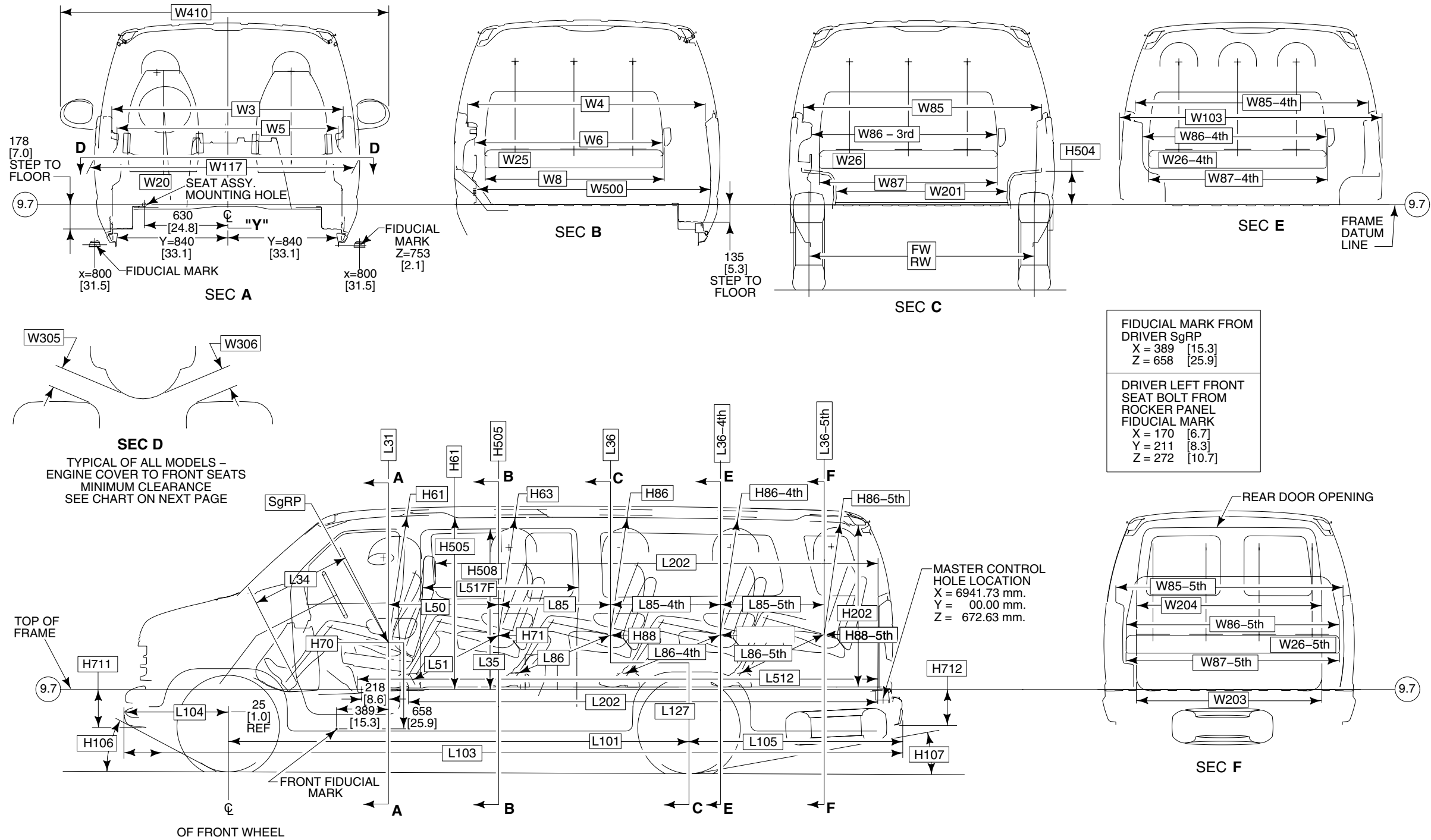
BB0031-2004

NOTES — [] DIMENSIONS ARE INCHES.
 — FOR FUEL FILLER LOCATIONS, SEE PAGE 72.
 — FOR DIMENSIONS NOT SHOWN, SEE PAGE 69-71.

DIMENSIONAL DATA E-350 SUPER DUTY EXTENDED WAGON 12/15-PASSENGER

2004
MODEL YEAR

E-SERIES



NOTES — [] DIMENSIONS ARE INCHES.
 — CH, LH, F, R, FW AND RW DIMENSIONS, PAGE 54.
 — SEAT TRACK TRAVEL, PAGE 78.

DIMENSIONAL DATA E-350 SUPER DUTY

2004
MODEL YEAR

EXTENDED WAGON 12/15-PASSENGER

CODE	DESCRIPTION	BASE BUCKET CARGO DOOR	CAPTAIN'S CHAIR SLIDING DOOR
EXTERIOR			
H106	ANGLE OF APPROACH	32.1°	32.1°
H107	ANGLE OF DEPARTURE	16.4°	16.4°
H711	FRAME DATUM LINE TO BOTTOM OF FRONT BUMPER	206 [8.1]	206 [8.1]
H712	FRAME DATUM LINE TO BOTTOM OF REAR BUMPER	256 [10.1]	256 [10.1]
L101	WHEELBASE	3503 [137.9]	3503 [137.9]
L103	OVERALL LENGTH	5889 [231.8]	5889 [231.8]
L104	OVERHANG — FRONT	762 [30.0]	762 [30.0]
L105	OVERHANG — REAR	1623 [63.9]	1623 [63.9]
W103	VEHICLE WIDTH	2013 [79.2]	2013 [79.2]
W117	BODY WIDTH AT H-POINT	1998 [78.7]	1998 [78.7]
W410	SAIL MOUNT — MANUAL/POWER MIRROR	2434 [93.9]	2434 [93.9]
	TRAILER TOW MIRROR / EXTENDED	2605 [102.5]/ 2753 [108.4]	2605 [102.5]/ 2753 [108.4]
FRONT COMPARTMENT			
H61	EFFECTIVE HEAD ROOM — FRONT	1069[42.1]	1069 [42.1]
H70	SgRP FRONT LEFT/RIGHT (Z)	604 [23.8]/ 599 [23.6]	604 [23.8]/ 599 [23.6]
L31	SgRP FRONT LEFT/RIGHT (X)	1188 [46.8]/ 1211 [47.6]	1188 [46.8]/ 1211 [47.6]
L34	MAXIMUM EFFECTIVE LEG ROOM	1015 [40.0]	1015 [40.0]
W3	SHOULDER ROOM — FRONT	1729 [68.1]	1728 [68.0]
W5	HIP ROOM — FRONT	1670 [65.7]	1670 [65.7]
W20	SgRP FRONT LEFT/RIGHT (Y)	-518 [-20.4]/ 518 [20.4]	-518 [-20.4]/ 518 [20.4]
W305	SEAT TO ENGINE COVER — DRIVER	186 [7.3]	133 [5.2]
W306	SEAT TO ENGINE COVER — PASSENGER	168 [6.6]	131 [5.2]
REAR COMPARTMENT — CARGO			
H504	WHEELHOUSE HEIGHT	220 [8.7]	220 [8.7]
H505	CARGO HEIGHT — MAXIMUM	1344 [52.9]	1339 [52.7]
L202	CARGO LENGTH — CLOSED FRONT	3572 [140.6]	3572 [140.6]
L204	CARGO LENGTH AT BELT — FRONT	3394 [133.6]	3394 [133.6]
L512	CARGO LENGTH TO ENGINE COVER	4019 [158.2]	4019 [158.2]
W201	CARGO WIDTH BETWEEN WHEELHOUSE	1312 [51.6]	1312 [51.6]
W500	CARGO BODY WIDTH AT FLOOR	1820 [71.7]	1820 [71.7]
V16	CARGO VOLUME — REAR OF FRONT SEAT - CU.FT.	8517.7 [300.8]	8483.9 [299.6]
REAR COMPARTMENT — SEATING			
H63	EFFECTIVE HEAD ROOM — 2ND	1019 [40.1]	1019 [40.1]
H71	SgRP 2ND LEFT/CENTER (Z)	665 [26.2]/ 665 [26.2]	665 [26.2]/ 665 [26.2]
H86	EFFECTIVE HEAD ROOM — 3RD	1019 [40.1]	1019 [40.1]
H86-4TH	EFFECTIVE HEAD ROOM — 4TH	1005 [39.6]	1005 [39.6]
H86-5TH	EFFECTIVE HEAD ROOM — 5TH	933 [36.7]	933 [36.7]
H88	SgRP 3RD (Z)	665 [26.2]	665 [26.2]

CODE	DESCRIPTION	BASE BUCKET CARGO DOOR	CAPTAIN'S CHAIR SLIDING DOOR
REAR COMPARTMENT — SEATING (continued)			
H88-4TH	SgRP 4TH (Z)	665 [26.2]	665 [26.2]
H88-5TH	SgRP 5TH (Z)	665 [26.2]	665 [26.2]
L35	SgRP 2ND LEFT/CENTER (X)	2032[80.0]	2032[80.0]
L36	SgRP 3RD (X)	2883 [113.5]	2883 [113.5]
L36-4TH	SgRP 4TH (X)	3718 [146.4]	3718 [146.4]
L36-5TH	SgRP 5TH (X)	4508[177.5]	4508 [177.5]
L50	H-POINT COUPLE DISTANCE	844 [33.2]	844 [33.2]
L51	EFFECTIVE LEG ROOM — 2ND	937 [36.9]	937 [36.9]
L85	SgRP COUPLE DISTANCE — 3RD	851 [33.5]	851 [33.5]
L85-4TH	SgRP COUPLE DISTANCE — 4TH	837 [32.9]	837 [32.9]
L85-5TH	SgRP COUPLE DISTANCE — 5TH	789 [31.0]	789 [31.0]
L86	EFFECTIVE LEG ROOM — 3RD	1046 [41.2]	1046 [41.2]
L86-4TH	EFFECTIVE LEG ROOM — 4TH	1033 [40.7]	1033 [40.7]
L86-5TH	EFFECTIVE LEG ROOM — 5TH	909 [35.8]	909 [35.8]
W4	SHOULDER ROOM — 2ND	1791 [70.5]	1799 [70.8]
W6	HIP ROOM — 2ND ARMREST DOWN/UP	1417 [55.8]/ 1689 [66.5]	1417 [55.8]/ 1745 [68.7]
W8	SEATING WIDTH — 2ND	1354 [53.3]	1354 [53.3]
W25	SgRP 2ND LEFT/CENTER (Y)	-545 [-21.4]/ -100 [-3.9]	-545 [-21.4]/ -100 [-3.9]
W26	SgRP 3RD LEFT/CENTER (Y)	-545 [-21.4]/ -99 [-3.9]	-545 [-21.4]/ -99 [-3.9]
W26-4TH	SgRP 4TH — LH (Y)	-545 [-21.4]	-546 [-21.5]
W26-5TH	SgRP 5TH — LH (Y)	631 [24.9]	631 [24.9]
W85	SHOULDER ROOM — 3RD	1808 [71.2]	1808 [71.2]
W85-4TH	SHOULDER ROOM — 4TH	1767 [69.6]	1767 [69.6]
W85-5TH	SHOULDER ROOM — 5TH	1730 [68.1]	1730 [68.1]
W86-3RD	HIP ROOM — 3RD ARMREST DOWN/UP	1413 [55.6]/ 1698 [66.9]	1413 [55.6]/ 1698 [66.9]
W86-4TH	HIP ROOM — 4TH ARMREST DOWN/UP (3-PASSENGER)	1402 [55.2]/ 1681 [66.2]	1402 [55.2]/ 1681 [66.2]
W86-5TH	HIP ROOM — 4TH/5TH (4-PASSENGER)	1684 [66.3]/ 1676 [66.0]	1684 [66.3]/ 1676 [66.0]
W87	SEATING WIDTH — 3RD	1354 [53.3]	1354 [53.3]
W87-4TH	SEATING WIDTH — 4TH (3-PASSENGER)	1350 [53.2]	1350 [53.2]
W87-5TH	SEATING WIDTH — 5TH (4-PASSENGER)	1623 [63.9]	1623 [63.9]
DOOR OPENINGS (ENTRANCE ROOM)			
H202	REAR OPENING HEIGHT	1224 [48.2]	1224 [48.2]
H508	ENTRANCE HEIGHT — CARGO SIDE	1206 [47.5]	1206 [47.5]
L517	ENTRANCE LENGTH — CARGO SIDE	1196 [47.1]	1006 [39.6]
W203	REAR OPENING WIDTH @ FLOOR	1384 [54.5]	1384 [54.5]
W204	REAR OPENING WIDTH AT BELT	1382 [54.4]	1382 [54.4]

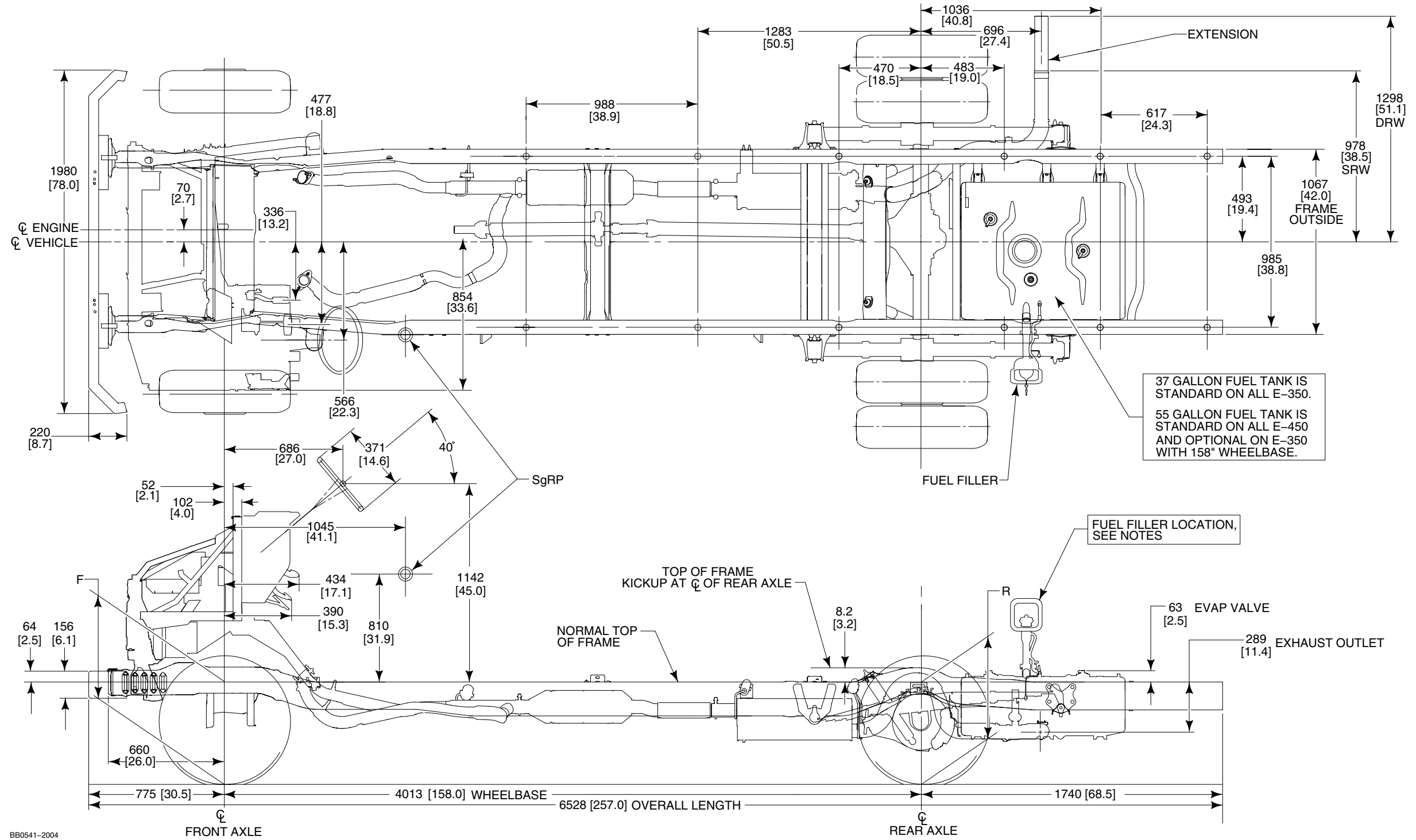
NOTE — [] DIMENSIONS ARE INCHES.

E-350/450 SUPER DUTY STRIPPED CHASSIS 158" WHEELBASE (DRW)

2004
MODEL YEAR

Page 65

E-SERIES



BB0541-2004

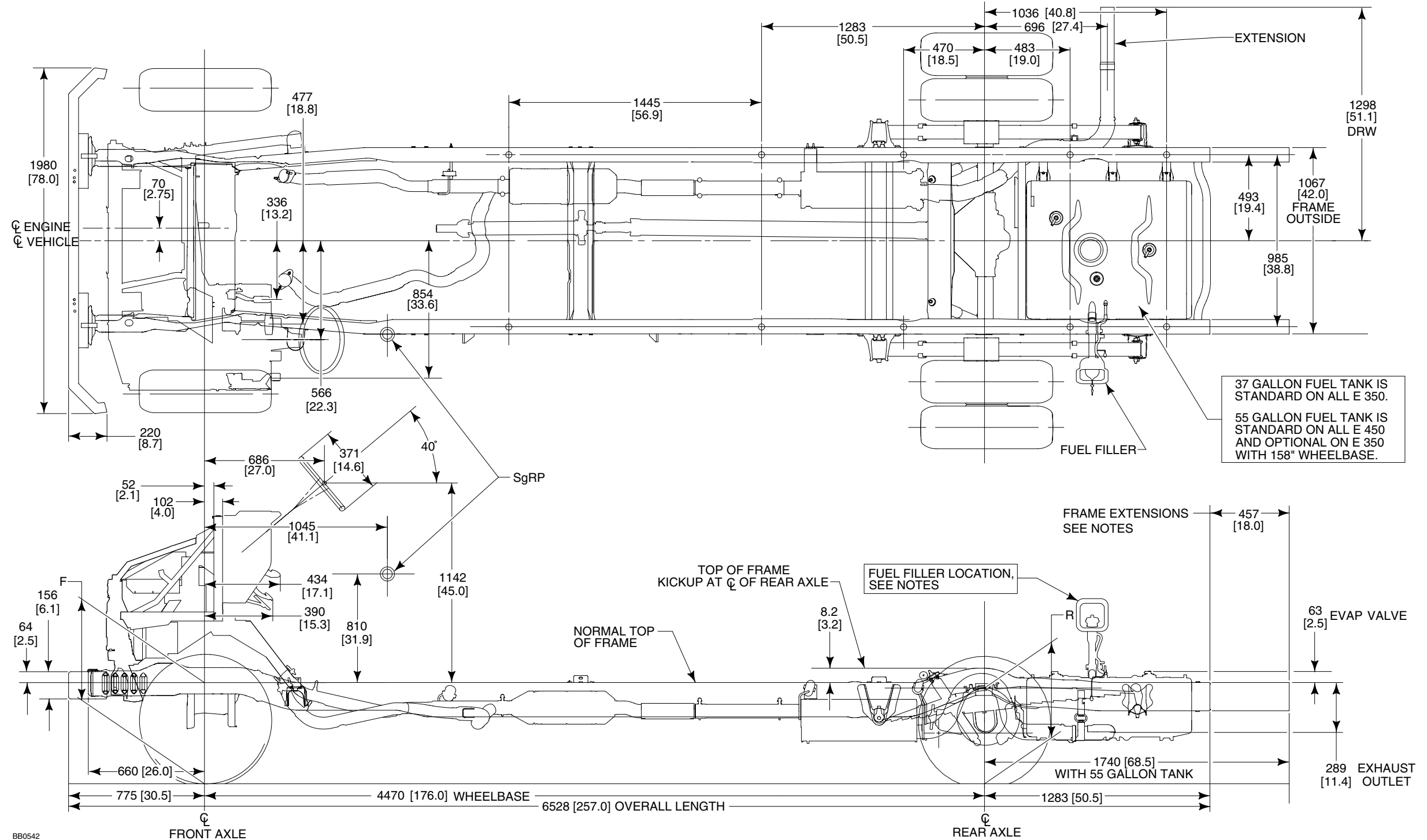
NOTES — [] DIMENSIONS ARE INCHES.
— FOR FUEL FILLER LOCATIONS, SEE PAGE 72.
— FOR DIMENSIONS NOT SHOWN, SEE PAGE 69-71.

E-350/450 SUPER DUTY STRIPPED CHASSIS 176" WHEELBASE (DRW)

2004
MODEL YEAR

Page 66

E-SERIES



37 GALLON FUEL TANK IS STANDARD ON ALL E 350.
55 GALLON FUEL TANK IS STANDARD ON ALL E 450 AND OPTIONAL ON E 350 WITH 158" WHEELBASE.

FRAME EXTENSIONS SEE NOTES

FUEL FILLER LOCATION, SEE NOTES

63 EVAP VALVE

289 EXHAUST [11.4] OUTLET

NOTES — [] DIMENSIONS ARE INCHES.
— FOR DIMENSIONS NOT SHOWN, SEE PAGE 69-71.
— FOR FUEL FILLER LOCATIONS, SEE PAGE 72.
— FOR FRAME EXTENSIONS, SEE PAGE 63.

BB0542

INCOMPLETE E-150/250/350 SUPER DUTY WITH RECREATIONAL TRIM

2004
MODEL YEAR

Page 55

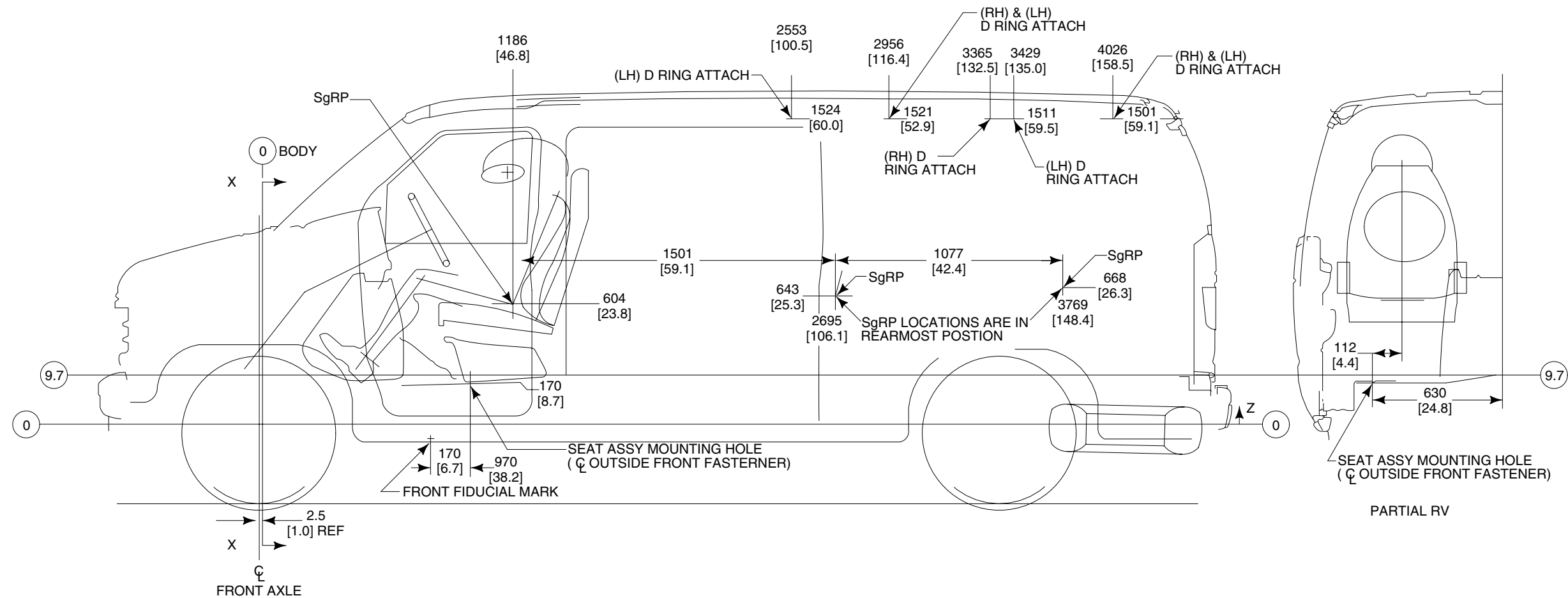
E-SERIES

NOTE: This sketch identifies the locations in 138-inch wheelbase Regular Length E-Series van equipped with Recreational Trim where Ford Motor Company provides anchorages for attachment of the upper or "D-ring" ends of the torso restraints for second and third row seats that

maybe installed by subsequent-stage manufacturers. The longitudinal distances from the vertical reference line for the second and third row seat anchorages are 116.4 inches and 158.5 inches, respectively.

NOTE: If a left-hand, second-row seat is installed, an anchorage must be installed by the subsequent-stage manufacturer on the left side of the vehicle at 16.4 inches. (This anchorage should be located symmetrically opposite the corresponding right-hand anchorage installed by Ford.) A nut mounted to a reinforcement plate and four rivets are furnished for this

purpose by Ford with the incomplete vehicle as part of the Recreational Trim. The sketch also identifies the rearmost seating reference points (SgRP's) for second and third row seats that may be installed. These are 106.1 inches and 148.4 inches (longitudinal), respectively. Call the Ford Truck Body Builders Advisory Service if there are any questions regarding this sketch.

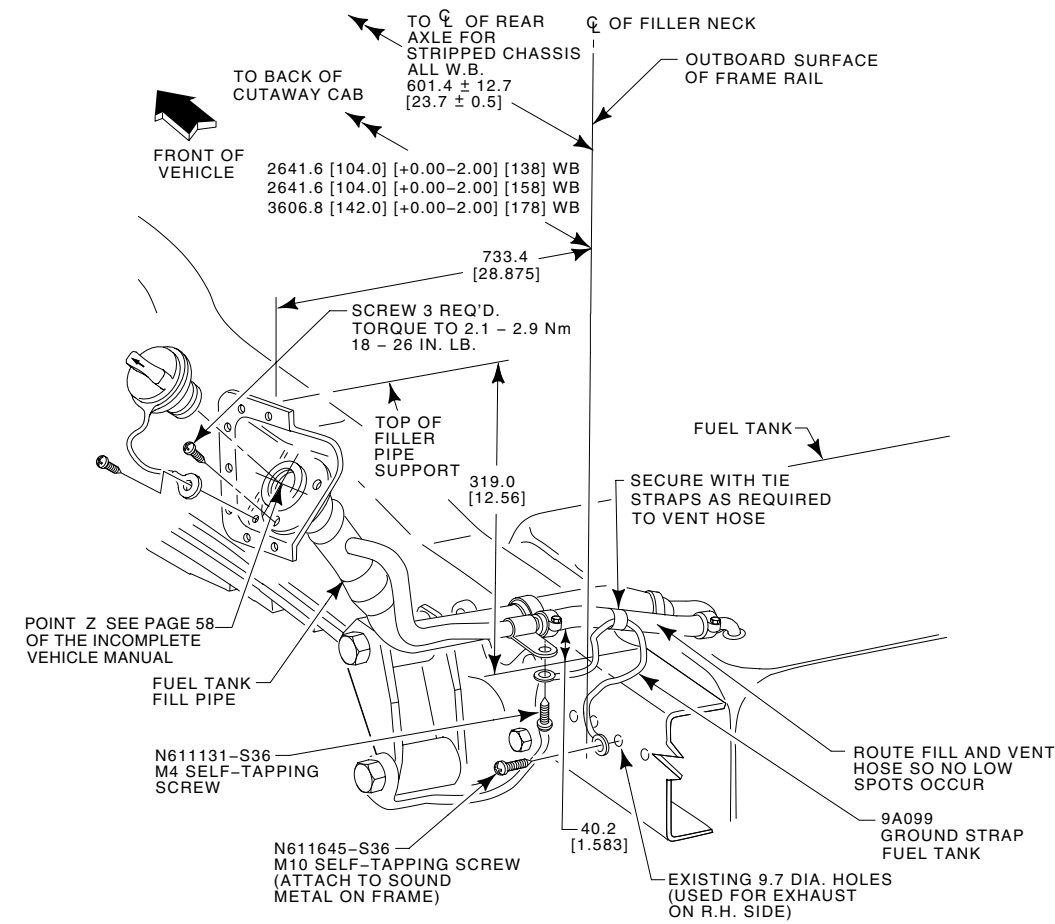


BB0126

NOTES — [] DIMENSIONS ARE INCHES.
 — CH, LH, F, R, FW AND RW, SEE PAGE 54.
 — SEAT TRACK TRAVEL, PAGE 78.

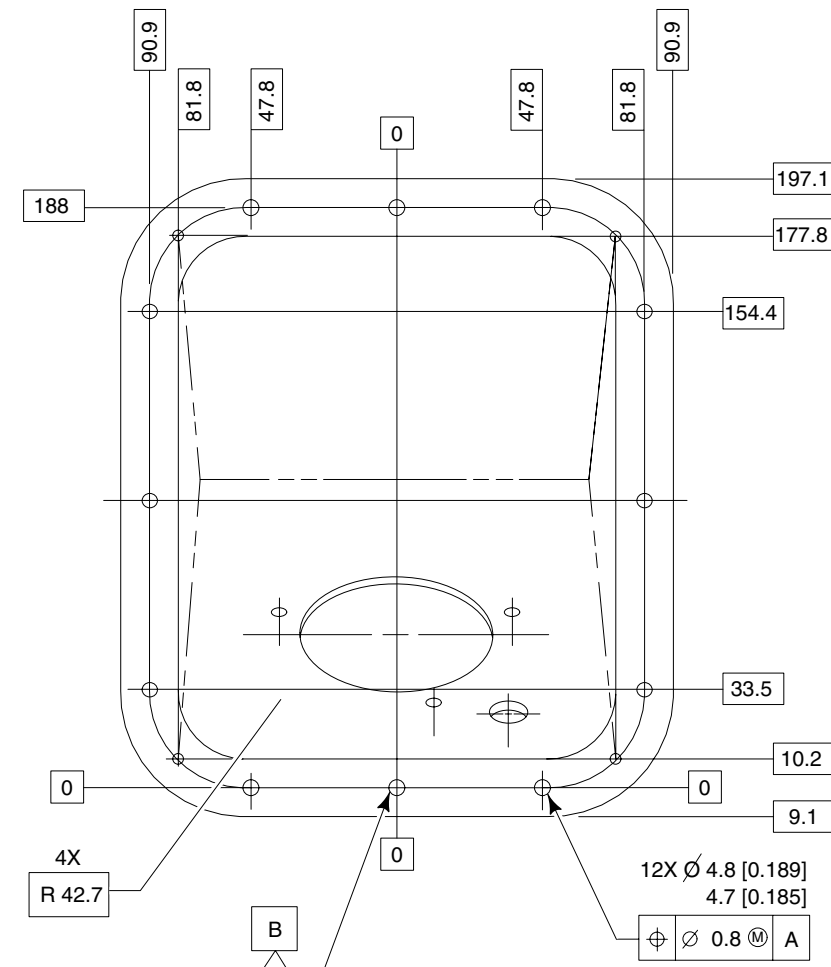
E-SERIES SUPER DUTY CUTAWAY/CHASSIS CAB/ STRIPPED CHASSIS FUEL FILLER SYSTEMS

2004
MODEL YEAR



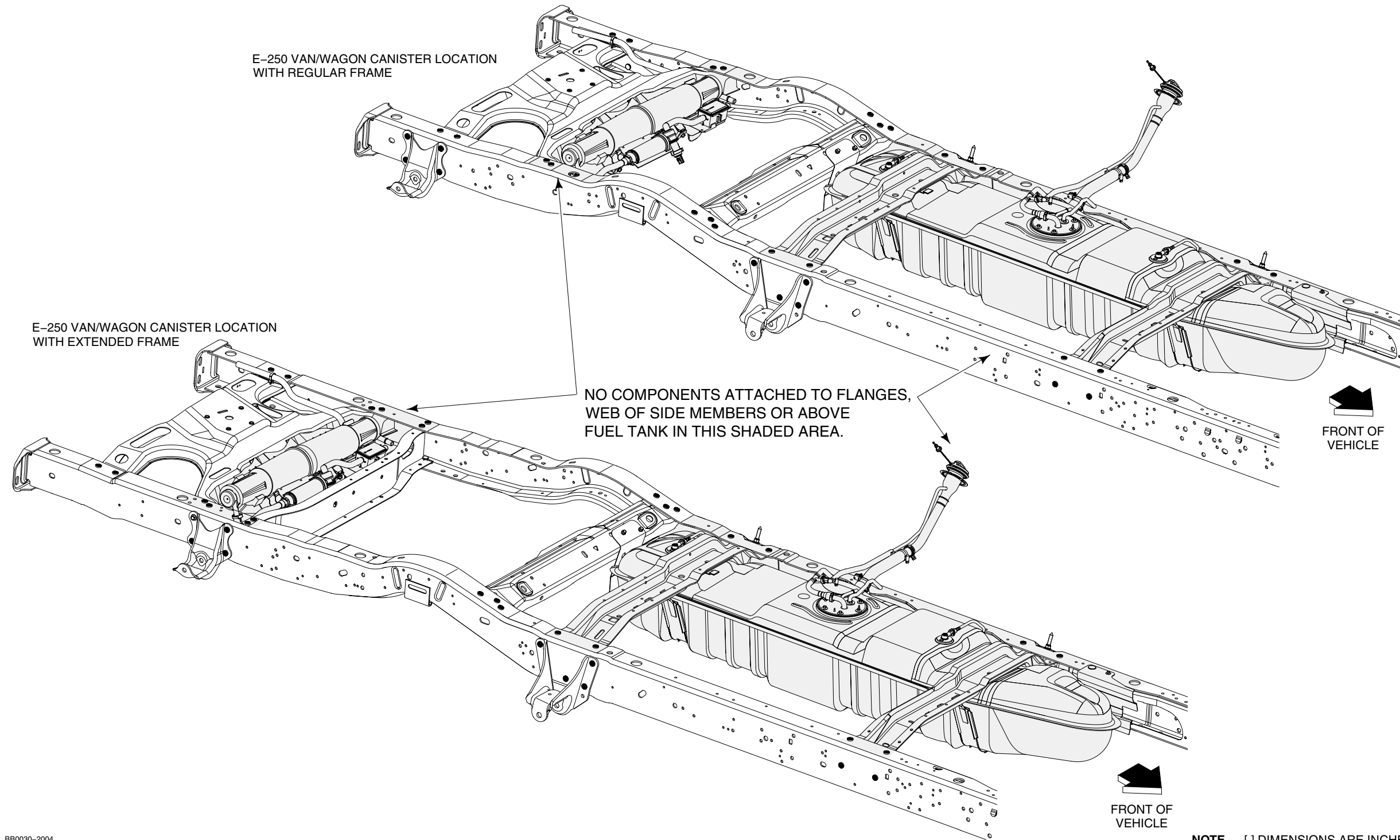
TORQUE ALL WORM GEAR DRIVEN HOSE CLAMPS TO 2.9 - 4.3 NM 25 - 38 IN-LB

▽ CRITICAL CONTROL ITEM



E-SERIES FUEL SYSTEM EVAPORATIVE EMISSIONS

2004
MODEL YEAR



E-SERIES WAGON MODEL LINEUP

2004
MODEL YEAR

E-SERIES MODEL	BODY CODE	WHEELBASE inches	CA inches	STANDARD ENGINE ⁽¹⁾ liters	STANDARD TRANSMISSION	MAXIMUM GVWR pounds	PASSENGER CAPACITY	BASE CURB WEIGHT ⁽²⁾		
								FRONT pounds	REAR pounds	TOTAL pounds
REGULAR/EXTENDED WAGON										
E-150 Wagon	E11	138	—	4.6L V-6	4-Spd. Auto OD (4R70W)	7000	7	2970	2536	5506
							8	2902	2334	5236
E-350 Super Duty Wagon	E31	138	—	5.4L V-8	4-Spd. Auto OD (4R75W)	8600	7	3246	2642	5888
				5.4L V-8 NGV	4-Spd. Auto OD (4R100)	8700	8	3226	2578	5804
				5.4L V-8	4-Spd. Auto OD (4R75W)	8600	12	3209	2692	5901
				5.4L V-8 NGV	4-Spd. Auto OD (4R100)	8700		3178	3308	6486
E-350 Super Duty Extended Wagon	S31	138	—	5.4L V-8	4-Spd. Auto OD (4R100)	9300	12	2945	3126	6071
				5.4L V-8 NGV		9300		2913	3743	6656
				5.4L V-8	9100	15	2920	3240	6160	
				6.8L V-10	9300		3125	3174	6299	
				6.0L V-8 ⁽³⁾	5-Spd. Auto OD (TorqShift™)		9400	3521	3268	6789
				5.4L V-8 NGV	4-Spd. Auto OD (4R100)		9100	2923	3737	6660

(1) Engine/transmission combinations may not be available on all models, or in all areas.

(2) Base curb weight is for standard equipment only.

(3) Late Availability

E-SERIES VAN MODEL LINEUP

2004
MODEL YEAR

E-SERIES MODEL	BODY CODE	WHEELBASE inches	CA inches	STANDARD ENGINE ⁽¹⁾ liters	STANDARD TRANSMISSION ⁽¹⁾	MAXIMUM GVWR pounds	MAXIMUM PAYLOAD ⁽³⁾ pounds	BASE CURB WEIGHT ⁽²⁾		
								FRONT pounds	REAR pounds	TOTAL pounds
REGULAR/EXTENDED VAN										
E-150 Van	E14	138	—	4.6L V-6	4-Spd. Auto. OD (4R70W)	6700/7000 ⁽⁴⁾	1865/2205 ⁽⁴⁾	2769/2741 ⁽⁴⁾	2065/2051 ⁽⁴⁾	4834/4792 ⁽⁴⁾
						6700 ⁽⁵⁾	1635 ⁽⁵⁾	2954 ⁽⁵⁾	2107 ⁽⁵⁾	5061 ⁽⁵⁾
E-250 Van	E24	138	—	4.6L V-8	4-Spd. Auto. OD (4R70W)	8600	3430	2877	2289	5166
				5.4L V-8 NGV	4-Spd. Auto OD (4R100)	8600 ⁽⁵⁾	3180 ⁽⁵⁾	3068 ⁽⁵⁾	2350 ⁽⁵⁾	5418 ⁽⁵⁾
E-250 Extended Van	S24	138	—	4.6L V-8	4-Spd. Auto. OD (4R70W)	8600	3225	2821	2550	5371
				4.6L V-6		8600 ⁽⁵⁾	3180 ⁽⁵⁾	3073 ⁽⁵⁾	2345 ⁽⁵⁾	5418 ⁽⁵⁾
E-350 Super Duty Van	E34	138	—	5.4L V-8	4-Spd. Auto. OD (4R100)	9500	4075	3032	2391	5423
				5.4L V-8 NGV		9500 ⁽⁵⁾	3850 ⁽⁵⁾	3206 ⁽⁵⁾	2443 ⁽⁵⁾	5649 ⁽⁵⁾
E-350 Super Duty Extended Van	S34	138	—	5.4L V-8	4-Spd. Auto. OD (4R100)	9400	3815	2944	2638	5582
				5.4L V-8 NGV		9400 ⁽⁵⁾	3415 ⁽⁵⁾	3132 ⁽⁵⁾	2703 ⁽⁵⁾	5835 ⁽⁵⁾
						9300	3140	2906	3251	6157

(1) Engine/transmission combinations may not be available on all models, or in all areas.

(2) Base curb weight is for standard equipment only.

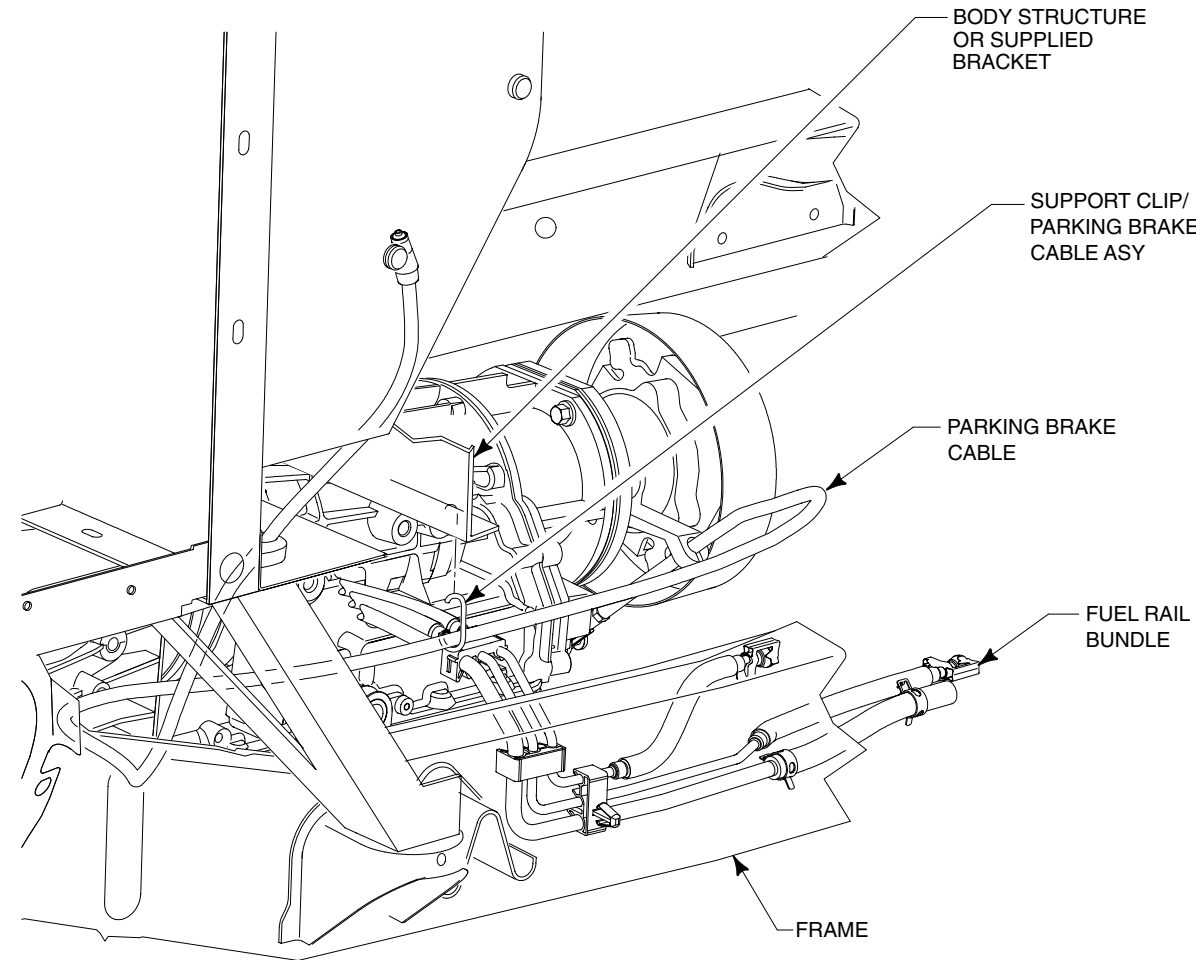
(3) Includes weight of driver, passengers and optional equipment.

(4) RV Conversion

(5) Crew Van

E-450 SUPER DUTY STRIPPED CHASSIS 158"/176" WHEELBASE (DRW) PARKING BRAKE CABLE ATTACHMENT

2004
MODEL YEAR



FRONT OF VEHICLE



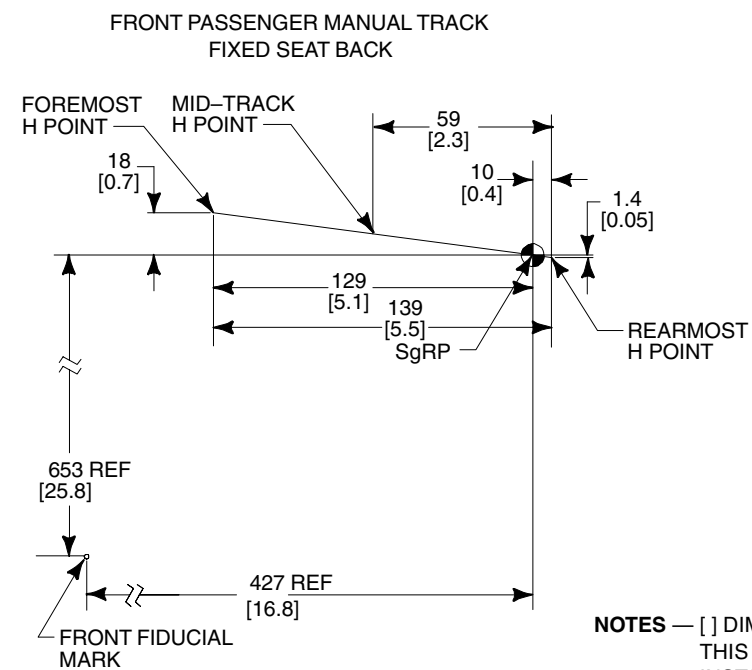
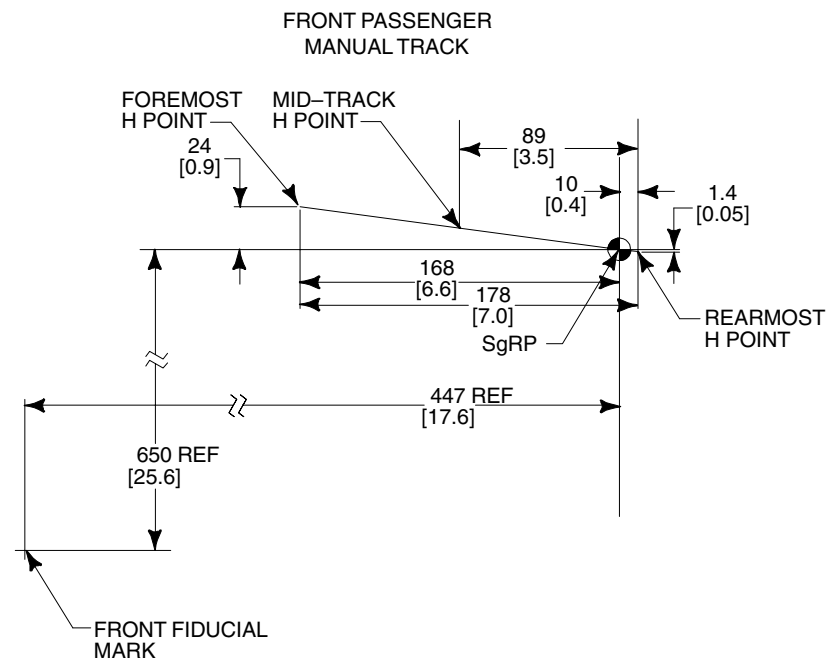
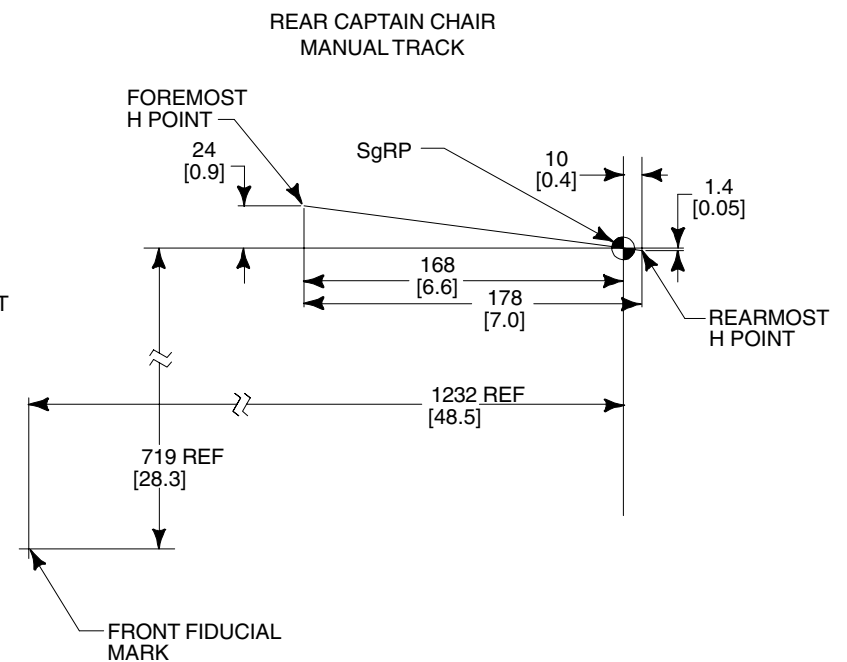
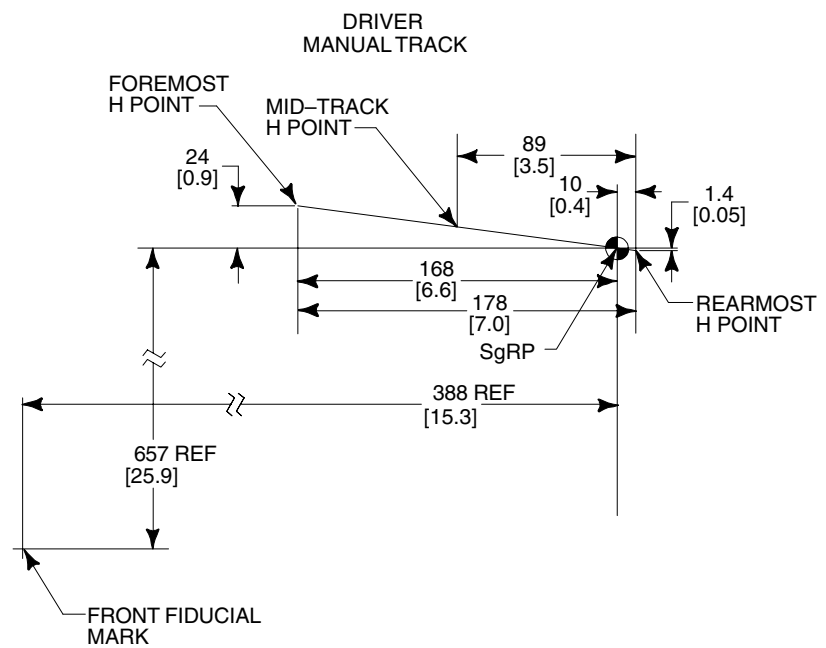
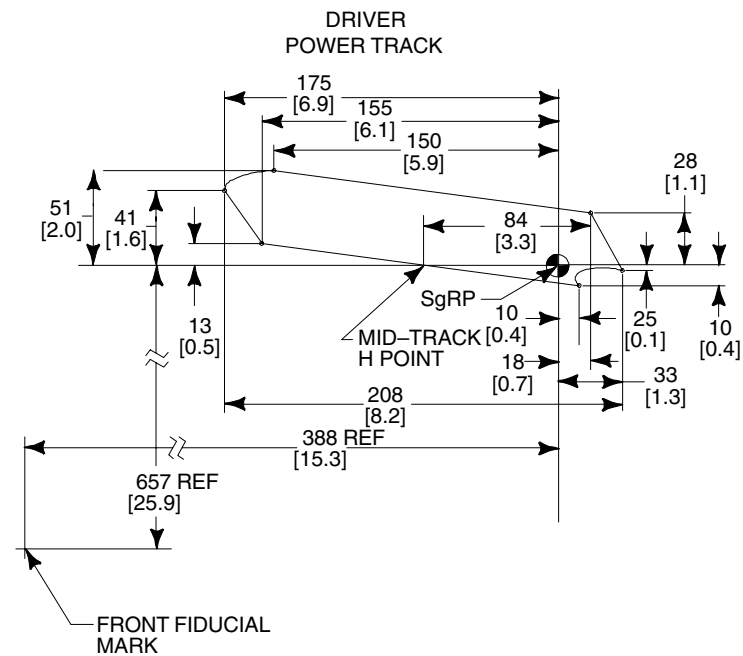
BB0548

RECOMMENDED PARKING BRAKE CABLE ATTACHMENT TO BODY

1. REMOVE TIE STRAP SECURING PARKING BRAKE CABLE TO FUEL BUNDLE.
2. USING CLIP SUPPLIED ON PARKING BRAKE CABLE, ATTACH CABLE TO BODY STRUCTURE OR BRACKET SUPPLIED BY BODY BUILDER IN AREA SHOWN.
3. TO ASSURE PROPER PARKING BRAKE FUNCTION THE CABLE SHOULD NOT DEVIATE FROM CURRENT PATH BY MORE THAN 2" SIDE TO SIDE.
4. NO PAINT IS ALLOWED ON CABLE ATTACHMENT ENDS OR ON PARKING BRAKE PEDAL ASSEMBLY.

E-SERIES SEAT TRACK TRAVEL/H-POINT LOCATION

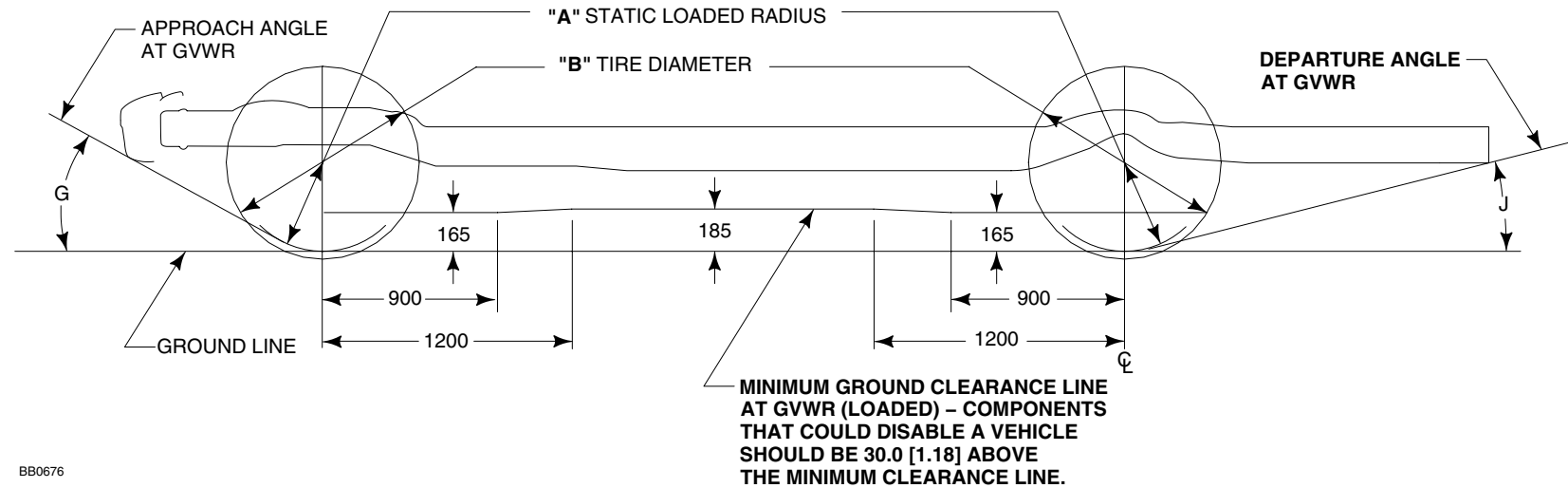
2004
MODEL YEAR



NOTES — [] DIMENSIONS ARE INCHES.
THIS INFORMATION IS PROVIDED TO ASSIST IN THE INSTALLATION OF SEATS OTHER THAN FORD INSTALLED SEATS AND TO HELP PRESERVE THE INTENDED PERFORMANCE OF THE SAFETY AND ERGONOMIC FEATURES OF THE 2004 E-SERIES. THE MID-TRACK H-POINT LOCATION MUST BE MAINTAINED IN ORDER TO COMPLY WITH F/CMVSS 208 AIRBAG REQUIREMENTS.

TIRE/GROUND CLEARANCE DATA SUPER DUTY CUTAWAY/CHASSIS CAB/STRIPPED CHASSIS

2004
MODEL YEAR



BASE VEHICLE LOADED

MODEL	TIRE SIZE	ALL SEASON TIRE DATA				TREAD WIDTH		OW	TH	TW	GROUND CLEARANCE							
		A	B	C		FW	RW	OVERALL WIDTH	STD	STD	G				J			
		STATIC LOADED RADIUS	MAX. DIAMETER	MAX. SECTION WIDTH	RIM WIDTH	FRONT	REAR	REAR	SPRING	SPRING	124" WB	138" WB	158" WB	176" WB	124" WB	138" WB	158" WB	176" WB
E-350 Cutaway SRW	LT245/75R16E	356 [14.0]	787 [31.0]	263 [10.3]	178 [7.0]	1763 [69.4]	1831 [72.1]	2094 [82.4]	307 [12.1]	710 [28.0]	N/A	33°	N/A	N/A	N/A	14°	N/A	N/A
E-350 Cutaway/Chassis Cab DRW	LT225/75R16E	346 [13.6]	757 [29.8]	236 [9.3]	152 [6.0]	1763 [69.4]	1859 [73.2]	2349 [92.5]	329 [12.9]	684 [26.9]	N/A	34°	34°	34°	N/A	14°	14°♦	14°♦
E-350 Stripped Chassis SRW	LT245/75R16E	356 [14.0]	787 [31.0]	263 [10.3]	178 [7.0]	1763 [69.4]	1687 [66.4]	1950 [76.7]	298 [11.7]	638 [25.1]	N/A	33°	31°	N/A	N/A	14°	14°	N/A
E-350 Stripped Chassis DRW	LT225/75R16E	346 [13.6]	757 [29.8]	236 [9.3]	152 [6.0]	1763 [69.4]	1859 [73.2]	2349 [92.5]	329 [12.9]	684 [26.9]	N/A	31°	31°	32°	N/A	14°	14°	14°
E-450 Cutaway/Chassis Cab DRW	LT225/75R16E	346 [13.6]	757 [29.8]	236 [9.3]	152 [6.0]	1763 [69.4]	1974 [77.7]	2464 [97.0]	325 [12.8]	743 [29.2]	N/A	N/A	34°	34°	N/A	N/A	14°♦	14°♦
E-450 Stripped Chassis DRW	LT225/75R16E	346 [13.6]	757 [29.8]	236 [9.3]	152 [6.0]	1763 [69.4]	1974 [77.7]	2464 [97.0]	325 [12.8]	743 [29.2]	N/A	N/A	31°	32°	N/A	N/A	14°♦	14°♦

♦ 55-gallon tank and 18 inch frame extension.

NOTE — [] DIMENSIONS ARE INCHES.